

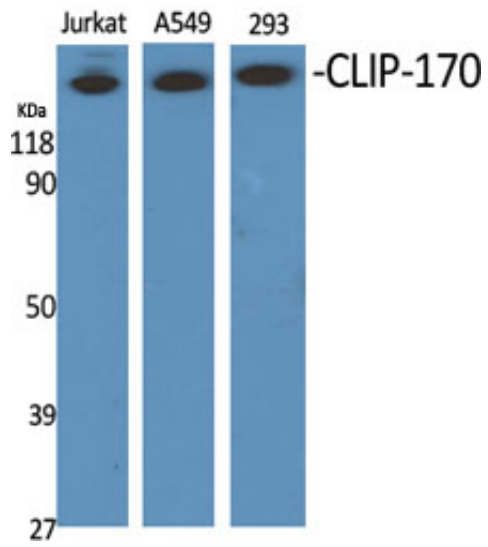
CLIP-170 Polyclonal Antibody

Catalog_no :	AT0968
Applications :	WB,ELISA
Reactivity :	Human,Mouse,Rat
Category :	抗原抗体
Size :	100µg/50µg/20µg
Gene_name :	CLIP1
Protein_name :	CAP-Gly domain-containing linker protein 1
Humangene_id :	6249
Humanswissprot_no :	P30622
Mousegene_id :	56430
Mouseswissprot_no :	Q922J3
Immunogen :	The antiserum was produced against synthesized peptide derived from human CLIP1. AA range:1291-1340
Specificity :	CLIP-170 Polyclonal Antibody detects endogenous levels of CLIP-170 protein.
Formulation :	Liquid in PBS containing 50% glycerol, 0.5% BSA and 0.02% sodium azide.
Source :	Rabbit
Dilution :	Western Blot: 1/500 - 1/2000. ELISA: 1/20000. Not yet tested in other applications.
Purification :	The antibody was affinity-purified from rabbit antiserum by affinity-chromatography using epitope-specific immunogen.
Concentration :	1 mg/ml
Storage_stability :	-20°C/1 year
Msds :	MSDS_Antibody.pdf
Other_name :	CLIP1; CYLN1; RSN; CAP-Gly domain-containing linker protein 1; Cytoplasmic linker protein 1; Cytoplasmic linker protein 170 alpha-2; CLIP-170; Reed-Sternberg intermediate filament-associated protein; Restin
Molecular	161KD

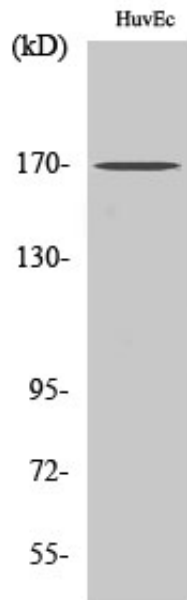


Weight :

Product Images



Western Blot analysis of various cells using CLIP-170 Polyclonal Antibody



Western Blot analysis of RAW264.7 cells using CLIP-170 Polyclonal Antibody