

## CLIP3 Polyclonal Antibody

Catalog_no :	AT0969
Applications :	WB,IHC-p,IF,ELISA
Reactivity :	Human,Mouse,Rat
Category :	抗原抗体
Size :	100µg/50µg/20µg
Gene_name :	CLIP3
Protein_name :	CAP-Gly domain-containing linker protein 3
Humangene_id :	<a href="#">25999</a>
Humanswissprot_no :	<a href="#">Q96DZ5</a>
Mousegene_id :	<a href="#">76686</a>
Mouseswissprot_no :	<a href="#">B9EHT4</a>
Immunogen :	The antiserum was produced against synthesized peptide derived from human CLIP3. AA range:361-410
Specificity :	CLIP3 Polyclonal Antibody detects endogenous levels of CLIP3 protein.
Formulation :	Liquid in PBS containing 50% glycerol, 0.5% BSA and 0.02% sodium azide.
Source :	Rabbit
Dilution :	Western Blot: 1/500 - 1/2000. Immunohistochemistry: 1/100 - 1/300. Immunofluorescence: 1/200 - 1/1000. ELISA: 1/40000. Not yet tested in other applications.
Purification :	The antibody was affinity-purified from rabbit antiserum by affinity-chromatography using epitope-specific immunogen.
Concentration :	1 mg/ml
Storage_stability :	-20°C/1 year
Msds :	<a href="#">MSDS_Antibody.pdf</a>
Other_name :	CLIP3; CLIPR59; CAP-Gly domain-containing linker protein 3; Cytoplasmic linker protein 170-related 59 kDa protein; CLIP-170-related 59 kDa protein; CLIPR-59

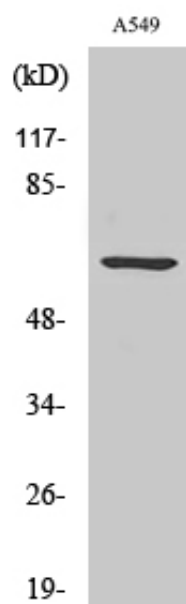


Molecular  
Weight :

60KD

---

## Product Images



Western Blot analysis of various cells using CLIP3 Polyclonal Antibody