

Egr-2 Polyclonal Antibody

Catalog_no :	AT1498
Applications :	WB,IHC-p,IF,ELISA
Reactivity :	Human,Mouse,Rat
Category :	抗原抗体
Size :	100µg/50µg/20µg
Gene_name :	EGR2
Protein_name :	Early growth response protein 2
Humangene_id :	1958/1959
Humanswissprot_no :	P18146/P11161
Mousegene_id :	13653/13654
Ratgene_id :	24330/114090
Ratswissprot_no :	P08154/P51774
Immunogen :	The antiserum was produced against synthesized peptide derived from human EGR1/2. AA range:371-420
Specificity :	Egr-2 Polyclonal Antibody detects endogenous levels of Egr-2 protein.
Formulation :	Liquid in PBS containing 50% glycerol, 0.5% BSA and 0.02% sodium azide.
Source :	Rabbit
Dilution :	Western Blot: 1/500 - 1/2000. Immunohistochemistry: 1/100 - 1/300. Immunofluorescence: 1/200 - 1/1000. ELISA: 1/20000. Not yet tested in other applications.
Purification :	The antibody was affinity-purified from rabbit antiserum by affinity-chromatography using epitope-specific immunogen.
Concentration :	1 mg/ml
Storage_stability :	-20°C/1 year
Msds :	MSDS_Antibody.pdf
Other_name :	EGR1; KROX24; ZNF225; Early growth response protein 1; EGR-1; AT225; Nerve growth

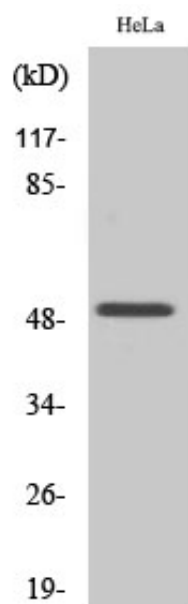


factor-induced protein A; NGFI-A; Transcription factor ETR103; Transcription factor Zif268; Zinc finger protein 225; Zinc finger protein Krox-24; EGR2; KROX20

Molecular
Weight :

50KD

Product Images



Western Blot analysis of various cells using Egr-2 Polyclonal Antibody cells nucleus extracted by Minute TM Cytoplasmic and Nuclear Fractionation kit (SC-003, Inventbiotech, MN, USA).