

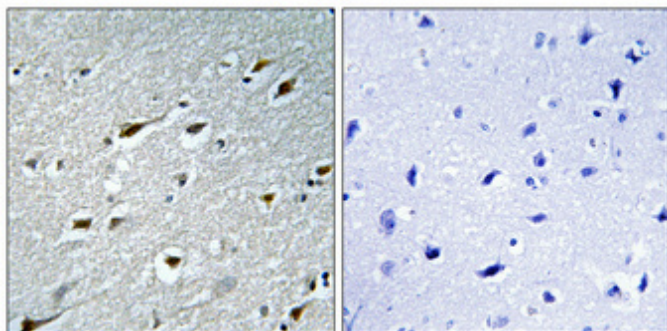
HAND1 Polyclonal Antibody

| | |
|---------------------|---|
| Catalog_no : | AT1501 |
| Applications : | IHC-p,ELISA |
| Reactivity : | Human,Mouse,Rat |
| Category : | 抗原抗体 |
| Size : | 100µg/50µg/20µg |
| Gene_name : | HAND1 |
| Protein_name : | Heart- and neural crest derivatives-expressed protein 1 |
| Humangene_id : | 9421 |
| Humanswissprot_no : | O96004 |
| Mousegene_id : | 15110 |
| Mouseswissprot_no : | Q64279 |
| Ratgene_id : | 59112 |
| Ratswissprot_no : | P97832 |
| Immunogen : | The antiserum was produced against synthesized peptide derived from human HAND1. AA range:71-120 |
| Specificity : | HAND1 Polyclonal Antibody detects endogenous levels of HAND1 protein. |
| Formulation : | Liquid in PBS containing 50% glycerol, 0.5% BSA and 0.02% sodium azide. |
| Source : | Rabbit |
| Dilution : | Immunohistochemistry: 1/100 - 1/300. ELISA: 1/20000. Not yet tested in other applications. |
| Purification : | The antibody was affinity-purified from rabbit antiserum by affinity-chromatography using epitope-specific immunogen. |
| Concentration : | 1 mg/ml |
| Storage_stability : | -20°C/1 year |
| Msds : | MSDS_Antibody.pdf |



Other_name : HAND1; BHLHA27; EHAND; Heart- and neural crest derivatives-expressed protein 1; Class A basic helix-loop-helix protein 27; bHLHa27; Extraembryonic tissues; heart, autonomic nervous system and neural crest derivatives-expressed protein 1; eH

Product Images



Immunohistochemical analysis of paraffin-embedded Human brain. Antibody was diluted at 1:100(4°,overnight). High-pressure and temperature Tris-EDTA,pH8.0 was used for antigen retrieval. Negative contrl (right) obtaned from antibody was pre-absorbed by immunogen peptide.