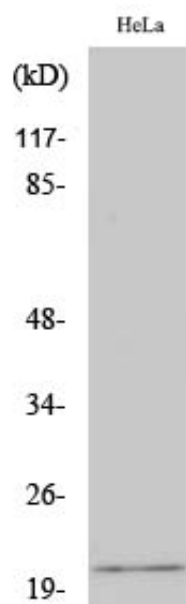




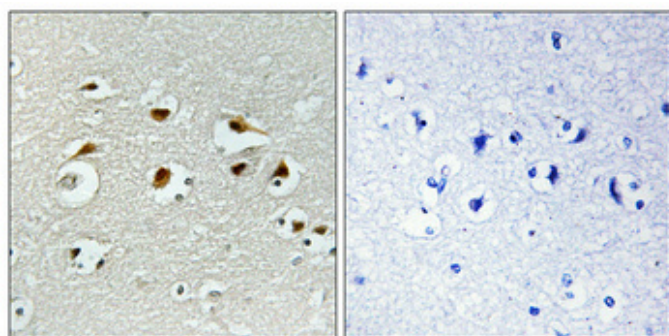
## EID-1 Polyclonal Antibody

Catalog_no :	AT1502
Applications :	WB,IHC-p,IF,ELISA
Reactivity :	Human
Category :	抗原抗体
Size :	100µg/50µg/20µg
Gene_name :	EID1
Protein_name :	EP300-interacting inhibitor of differentiation 1
Humangene_id :	<a href="#">23741</a>
Humanswissprot_no :	<a href="#">Q9Y6B2</a>
Immunogen :	The antiserum was produced against synthesized peptide derived from human EID1. AA range:71-120
Specificity :	EID-1 Polyclonal Antibody detects endogenous levels of EID-1 protein.
Formulation :	Liquid in PBS containing 50% glycerol, 0.5% BSA and 0.02% sodium azide.
Source :	Rabbit
Dilution :	Western Blot: 1/500 - 1/2000. Immunohistochemistry: 1/100 - 1/300. Immunofluorescence: 1/200 - 1/1000. ELISA: 1/10000. Not yet tested in other applications.
Purification :	The antibody was affinity-purified from rabbit antiserum by affinity-chromatography using epitope-specific immunogen.
Concentration :	1 mg/ml
Storage_stability :	-20°C/1 year
Msds :	<a href="#">MSDS_Antibody.pdf</a>
Other_name :	EID1; C15orf3; CRI1; RBP21; PNAS-22; PTD014; EP300-interacting inhibitor of differentiation 1; 21 kDa pRb-associated protein; CREBBP/EP300 inhibitory protein 1; E1A-like inhibitor of differentiation 1; EID-1
Molecular Weight :	21KD

## Product Images



Western Blot analysis of various cells using EID-1 Polyclonal Antibody



Immunohistochemical analysis of paraffin-embedded Human brain. Antibody was diluted at 1:100(4°,overnight). High-pressure and temperature Tris-EDTA,pH8.0 was used for antigen retrieval. Negative contrl (right) obtaned from antibody was pre-absorbed by immunogen peptide.