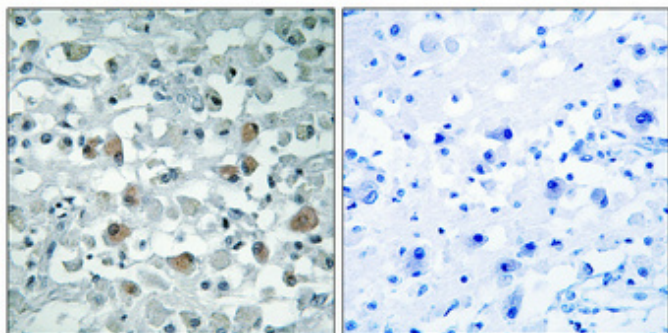


eIF1AY Polyclonal Antibody

Catalog_no :	AT1503
Applications :	IHC-p,ELISA
Reactivity :	Human,Mouse,Rat
Category :	抗原抗体
Size :	100µg/50µg/20µg
Gene_name :	EIF1AY
Protein_name :	Eukaryotic translation initiation factor 1A Y-chromosomal
Humangene_id	9086
:	
Humanswissprot	O14602
_no :	
Immunogen :	The antiserum was produced against synthesized peptide derived from human EIF1AY. AA range:21-70
Specificity :	eIF1AY Polyclonal Antibody detects endogenous levels of eIF1AY protein.
Formulation :	Liquid in PBS containing 50% glycerol, 0.5% BSA and 0.02% sodium azide.
Source :	Rabbit
Dilution :	Immunohistochemistry: 1/100 - 1/300. ELISA: 1/40000. Not yet tested in other applications.
Purification :	The antibody was affinity-purified from rabbit antiserum by affinity-chromatography using epitope-specific immunogen.
Concentration :	1 mg/ml
Storage_stability	-20°C/1 year
:	
Msds :	MSDS_Antibody.pdf
Other_name :	EIF1AY; Eukaryotic translation initiation factor 1A; Y-chromosomal; eIF-1A Y isoform; Eukaryotic translation initiation factor 4C; eIF-4C

Product Images



Immunohistochemical analysis of paraffin-embedded Human brain. Antibody was diluted at 1:100(4°,overnight). High-pressure and temperature Tris-EDTA,pH8.0 was used for antigen retrieval. Negative contrl (right) obtaned from antibody was pre-absorbed by immunogen peptide.