

eIF3L Polyclonal Antibody

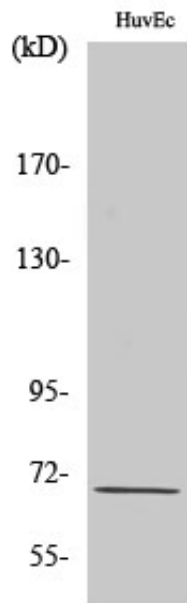
Catalog_no :	<u>AT1511</u>
Applications :	<u>WB,IF,ELISA</u>
Reactivity :	<u>Human,Mouse</u>
Category :	<u>抗原抗体</u>
Size :	<u>100µg/50µg/20µg</u>
Gene_name :	<u>EIF3L</u>
Protein_name :	<u>Eukaryotic translation initiation factor 3 subunit L</u>
Humangene_id :	<u>51386</u>
Humanswissprot_no :	<u>Q9Y262</u>
Mousegene_id :	<u>223691</u>
Mouseswissprot_no :	<u>Q8QZY1</u>
Immunogen :	<u>The antiserum was produced against synthesized peptide derived from human IF3EI. AA range:1-50</u>
Specificity :	<u>eIF3L Polyclonal Antibody detects endogenous levels of eIF3L protein.</u>
Formulation :	<u>Liquid in PBS containing 50% glycerol, 0.5% BSA and 0.02% sodium azide.</u>
Source :	<u>Rabbit</u>
Dilution :	<u>Western Blot: 1/500 - 1/2000. Immunofluorescence: 1/200 - 1/1000. ELISA: 1/20000. Not yet tested in other applications.</u>
Purification :	<u>The antibody was affinity-purified from rabbit antiserum by affinity-chromatography using epitope-specific immunogen.</u>
Concentration :	<u>1 mg/ml</u>
Storage_stability :	<u>-20°C/1 year</u>
Msds :	<u>MSDS_Antibody.pdf</u>
Other_name :	<u>EIF3L; EIF3EIP; EIF3S6IP; HSPC021; HSPC025; MSTP005; Eukaryotic translation initiation factor 3 subunit L; eIF3I; Eukaryotic translation initiation factor 3 subunit 6-interacting protein; Eukaryotic translation initiation factor 3 subunit E</u>



Molecular
Weight :

67KD

Product Images



Western Blot analysis of various cells using eIF3L Polyclonal Antibody diluted at 1 : 1000