

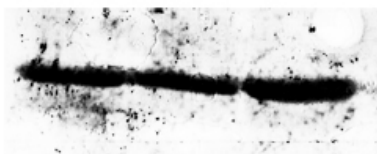


eIF3α Polyclonal Antibody

Catalog_no :	<u>AT1512</u>
Applications :	<u>WB,ELISA</u>
Reactivity :	<u>Human,Mouse,Rat</u>
Category :	<u>抗原抗体</u>
Size :	<u>100µg/50µg/20µg</u>
Gene_name :	<u>EIF3J</u>
Protein_name :	<u>Eukaryotic translation initiation factor 3 subunit J</u>
Humangene_id :	<u>8669</u>
Humanswissprot_no :	<u>O75822</u>
Ratgene_id :	<u>691947</u>
Ratswissprot_no :	<u>A0JPM9</u>
Immunogen :	<u>Synthesized peptide derived from eIF3α . at AA range: 40-120</u>
Specificity :	<u>eIF3α Polyclonal Antibody detects endogenous levels of eIF3α protein.</u>
Formulation :	<u>Liquid in PBS containing 50% glycerol, 0.5% BSA and 0.02% sodium azide.</u>
Source :	<u>Rabbit</u>
Dilution :	<u>Western Blot: 1/500 - 1/2000. ELISA: 1/40000. Not yet tested in other applications.</u>
Purification :	<u>The antibody was affinity-purified from rabbit antiserum by affinity-chromatography using epitope-specific immunogen.</u>
Concentration :	<u>1 mg/ml</u>
Storage_stability :	<u>-20°C/1 year</u>
Msds :	<u>MSDS_Antibody.pdf</u>
Other_name :	<u>EIF3J; EIF3S1; Eukaryotic translation initiation factor 3 subunit J; eIF3j; Eukaryotic translation initiation factor 3 subunit 1; eIF-3-alpha; eIF3 p35</u>
Molecular Weight :	<u>30KD</u>

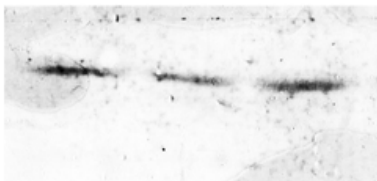
Product Images

SH-SY5Y 293T 3T3



Tubulin 55KD

Western Blot analysis of various cells using Antibody diluted at 1:1000. Secondary antibody was diluted at 1:20000



eIF3α 30KD