



EKLF/CKLF/UKLF Polyclonal Antibody

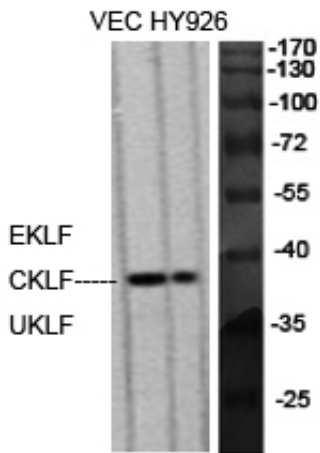
Catalog_no :	<u>AT1522</u>
Applications :	<u>WB,IF,ELISA</u>
Reactivity :	<u>Human,Mouse,Rat</u>
Category :	<u>抗原抗体</u>
Size :	<u>100µg/50µg/20µg</u>
Gene_name :	<u>KLF1/KLF5/KLF7</u>
Protein_name :	<u>Krueppel-like factor 1/Krueppel-like factor 5/Krueppel-like factor 7</u>
Humangene_id :	<u>10661/688/8609</u>
Humanswissprot_no :	<u>Q13351/Q13887/O75840</u>
Mousegene_id :	<u>12224/93691</u>
Immunogen :	<u>The antiserum was produced against synthesized peptide derived from human KLF. AA range:291-340</u>
Specificity :	<u>EKLF/CKLF/UKLF Polyclonal Antibody detects endogenous levels of EKLF/CKLF/UKLF protein.</u>
Formulation :	<u>Liquid in PBS containing 50% glycerol, 0.5% BSA and 0.02% sodium azide.</u>
Source :	<u>Rabbit</u>
Dilution :	<u>Western Blot: 1/500 - 1/2000. Immunofluorescence: 1/200 - 1/1000. ELISA: 1/20000. Not yet tested in other applications.</u>
Purification :	<u>The antibody was affinity-purified from rabbit antiserum by affinity-chromatography using epitope-specific immunogen.</u>
Concentration :	<u>1 mg/ml</u>
Storage_stability :	<u>-20°C/1 year</u>
Msds :	<u>MSDS_Antibody.pdf</u>
Other_name :	<u>KLF1; EKLF; Krueppel-like factor 1; Erythroid krueppel-like transcription factor; EKLF; KLF5; BTEB2; CKLF; IKLF; Krueppel-like factor 5; Basic transcription element-binding protein 2; BTE-binding protein 2; Colon krueppel-like factor; GC-bo</u>
Molecular Weight :	<u>38KD</u>



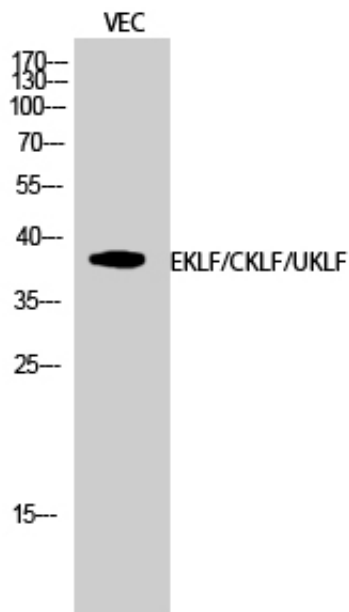
专注二抗产品

Biodragon旗下品牌

Product Images



Western Blot analysis of various cells using EKLf/CKLf/UKLf Polyclonal Antibody diluted at 1 : 500 cells nucleus extracted by Minute TM Cytoplasmic and Nuclear Fractionation kit (SC-003, Inventbiotech, MN, USA).



Western Blot analysis of VEC cells using EKLf/CKLf/UKLf Polyclonal Antibody diluted at 1 : 500 cells nucleus extracted by Minute TM Cytoplasmic and Nuclear Fractionation kit (SC-003, Inventbiotech, MN, USA).