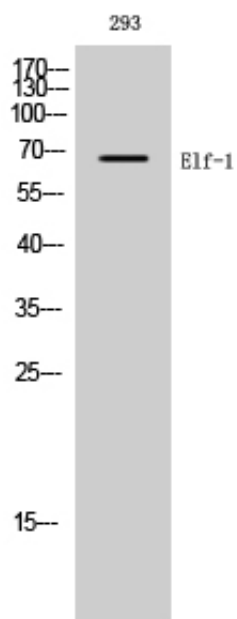




## Elf-1 Polyclonal Antibody

Catalog_no :	AT1523
Applications :	WB,IHC-p,IF,ELISA
Reactivity :	Human
Category :	抗原抗体
Size :	100µg/50µg/20µg
Gene_name :	ELF1
Protein_name :	ETS-related transcription factor Elf-1
Humangene_id :	<a href="#">1997</a>
Humanswissprot_no :	<a href="#">P32519</a>
Immunogen :	The antiserum was produced against synthesized peptide derived from human ELF1. AA range:537-586
Specificity :	Elf-1 Polyclonal Antibody detects endogenous levels of Elf-1 protein.
Formulation :	Liquid in PBS containing 50% glycerol, 0.5% BSA and 0.02% sodium azide.
Source :	Rabbit
Dilution :	Western Blot: 1/500 - 1/2000. Immunohistochemistry: 1/100 - 1/300. Immunofluorescence: 1/200 - 1/1000. ELISA: 1/20000. Not yet tested in other applications.
Purification :	The antibody was affinity-purified from rabbit antiserum by affinity-chromatography using epitope-specific immunogen.
Concentration :	1 mg/ml
Storage_stability :	-20°C/1 year
Msds :	<a href="#">MSDS_Antibody.pdf</a>
Other_name :	ELF1; ETS-related transcription factor Elf-1; E74-like factor 1
Molecular Weight :	67KD

## Product Images



Western Blot analysis of 293 cells using Elf-1 Polyclonal Antibody diluted at 1 : 1000