

## Elf-4 Polyclonal Antibody

Catalog_no :	AT1524
Applications :	WB,ELISA
Reactivity :	Human,Mouse
Category :	抗原抗体
Size :	100µg/50µg/20µg
Gene_name :	ELF4
Protein_name :	ETS-related transcription factor Elf-4
Humangene_id :	<a href="#">2000</a>
Humanswissprot_no :	<a href="#">Q99607</a>
Mousegene_id :	<a href="#">56501</a>
Mouseswissprot_no :	<a href="#">Q9Z2U4</a>
Immunogen :	The antiserum was produced against synthesized peptide derived from human ELF4. AA range:178-227
Specificity :	Elf-4 Polyclonal Antibody detects endogenous levels of Elf-4 protein.
Formulation :	Liquid in PBS containing 50% glycerol, 0.5% BSA and 0.02% sodium azide.
Source :	Rabbit
Dilution :	Western Blot: 1/500 - 1/2000. ELISA: 1/10000. Not yet tested in other applications.
Purification :	The antibody was affinity-purified from rabbit antiserum by affinity-chromatography using epitope-specific immunogen.
Concentration :	1 mg/ml
Storage_stability :	-20°C/1 year
Msds :	<a href="#">MSDS_Antibody.pdf</a>
Other_name :	ELF4; ELFR; MEF; ETS-related transcription factor Elf-4; E74-like factor 4; Myeloid Elf-1-like factor
Molecular Weight :	70KD

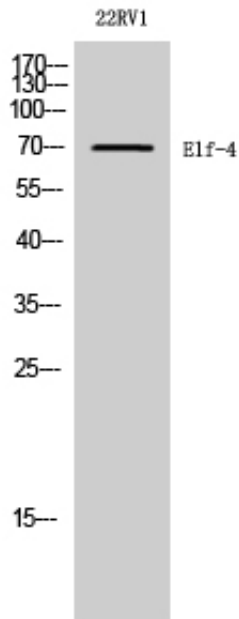


**专注二抗产品**

Biodragon旗下品牌

---

## Product Images



Western Blot analysis of 22RV1 cells using Elf-4 Polyclonal Antibody diluted at 1 : 2000 cells nucleus extracted by Minute TM Cytoplasmic and Nuclear Fractionation kit (SC-003, Inventbiotech, MN, USA).