



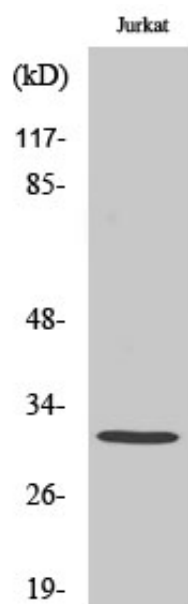
Elf-5 Polyclonal Antibody

Catalog_no :	AT1525
Applications :	WB,IF,ELISA
Reactivity :	Human,Mouse
Category :	抗原抗体
Size :	100µg/50µg/20µg
Gene_name :	ELF5
Protein_name :	ETS-related transcription factor Elf-5
Humangene_id :	2001
Humanswissprot_no :	Q9UKW6
Mousegene_id :	13711
Mouseswissprot_no :	Q8VDK3
Immunogen :	The antiserum was produced against synthesized peptide derived from human ELF5. AA range:191-240
Specificity :	Elf-5 Polyclonal Antibody detects endogenous levels of Elf-5 protein.
Formulation :	Liquid in PBS containing 50% glycerol, 0.5% BSA and 0.02% sodium azide.
Source :	Rabbit
Dilution :	Western Blot: 1/500 - 1/2000. Immunofluorescence: 1/200 - 1/1000. ELISA: 1/20000. Not yet tested in other applications.
Purification :	The antibody was affinity-purified from rabbit antiserum by affinity-chromatography using epitope-specific immunogen.
Concentration :	1 mg/ml
Storage_stability :	-20°C/1 year
Msds :	MSDS_Antibody.pdf
Other_name :	ELF5; ESE2; ETS-related transcription factor Elf-5; E74-like factor 5; Epithelium-restricted ESE-1-related Ets factor; Epithelium-specific Ets transcription factor 2; ESE-2
Molecular	31KD



Weight :

Product Images



Western Blot analysis of various cells using Elf-5 Polyclonal Antibody cells nucleus extracted by Minute TM Cytoplasmic and Nuclear Fractionation kit (SC-003, Inventbiotech, MN, USA).