



## EMMPRIN Polyclonal Antibody

Catalog_no :	<u>AT1542</u>
Applications :	<u>WB,IHC-p,ELISA</u>
Reactivity :	<u>Human,Mouse,Rat</u>
Category :	<u>抗原抗体</u>
Size :	<u>100µg/50µg/20µg</u>
Gene_name :	<u>BSG</u>
Protein_name :	<u>Basigin</u>
Humangene_id :	<u><a href="#">682</a></u>
Humanswissprot_no :	<u><a href="#">P35613</a></u>
Mousegene_id :	<u><a href="#">12215</a></u>
Mouseswissprot_no :	<u><a href="#">P18572</a></u>
Ratgene_id :	<u><a href="#">25246</a></u>
Ratswissprot_no :	<u><a href="#">P26453</a></u>
Immunogen :	<u>The antiserum was produced against synthesized peptide derived from human CD147. AA range:336-385</u>
Specificity :	<u>EMMPRIN Polyclonal Antibody detects endogenous levels of EMMPRIN protein.</u>
Formulation :	<u>Liquid in PBS containing 50% glycerol, 0.5% BSA and 0.02% sodium azide.</u>
Source :	<u>Rabbit</u>
Dilution :	<u>Western Blot: 1/500 - 1/2000. Immunohistochemistry: 1/100 - 1/300. ELISA: 1/10000. Not yet tested in other applications.</u>
Purification :	<u>The antibody was affinity-purified from rabbit antiserum by affinity-chromatography using epitope-specific immunogen.</u>
Concentration :	<u>1 mg/ml</u>
Storage_stability :	<u>-20°C/1 year</u>
Msds :	<u>MSDS_Antibody.pdf</u>



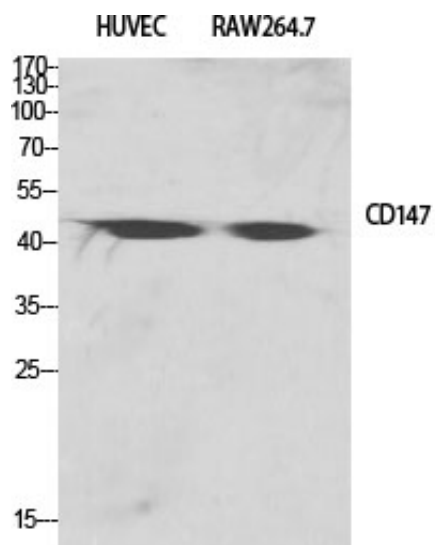
Other\_name : BSG; Basigin; 5F7; Collagenase stimulatory factor; Extracellular matrix metalloproteinase inducer; EMMPRIN; Leukocyte activation antigen M6; OK blood group antigen; Tumor cell-derived collagenase stimulatory factor; TCSF; CD antigen CD147

---

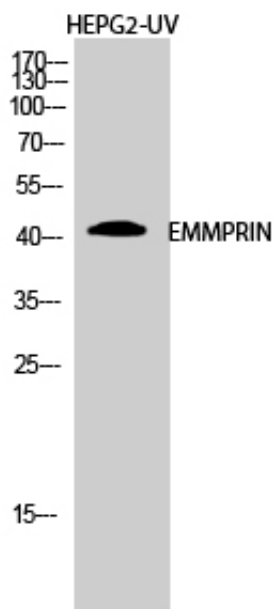
Molecular Weight : 48KD

---

## Product Images



Western Blot analysis of various cells using EMMPRIN Polyclonal Antibody diluted at 1 : 2000



Western Blot analysis of HEPG2-UV cells using EMMPRIN Polyclonal Antibody diluted at 1 : 2000