

## Emp Polyclonal Antibody

Catalog_no :	AT1543
Applications :	WB,IHC-p,ELISA
Reactivity :	Human,Mouse,Rat
Category :	抗原抗体
Size :	100µg/50µg/20µg
Gene_name :	MAEA
Protein_name :	Macrophage erythroblast attacher
Humangene_id :	<a href="#">10296</a>
Humanswissprot_no :	<a href="#">Q7L5Y9</a>
Mousegene_id :	<a href="#">59003</a>
Mouseswissprot_no :	<a href="#">Q4VC33</a>
Ratgene_id :	<a href="#">298982</a>
Ratswissprot_no :	<a href="#">Q5RKJ1</a>
Immunogen :	The antiserum was produced against synthesized peptide derived from human MAEA. AA range:181-230
Specificity :	Emp Polyclonal Antibody detects endogenous levels of Emp protein.
Formulation :	Liquid in PBS containing 50% glycerol, 0.5% BSA and 0.02% sodium azide.
Source :	Rabbit
Dilution :	Western Blot: 1/500 - 1/2000. Immunohistochemistry: 1/100 - 1/300. ELISA: 1/20000. Not yet tested in other applications.
Purification :	The antibody was affinity-purified from rabbit antiserum by affinity-chromatography using epitope-specific immunogen.
Concentration :	1 mg/ml
Storage_stability :	-20°C/1 year
Msds :	MSDS_Antibody.pdf



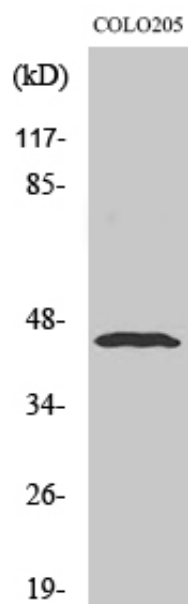
Other\_name : MAEA; EMP; HLC10; PIG5; Macrophage erythroblast attacher; Cell proliferation-inducing gene 5 protein; Erythroblast macrophage protein; Human lung cancer oncogene 10 protein; HLC-10

---

Molecular Weight : 45KD

---

## Product Images



Western Blot analysis of various cells using Emp Polyclonal Antibody diluted at 1 : 500