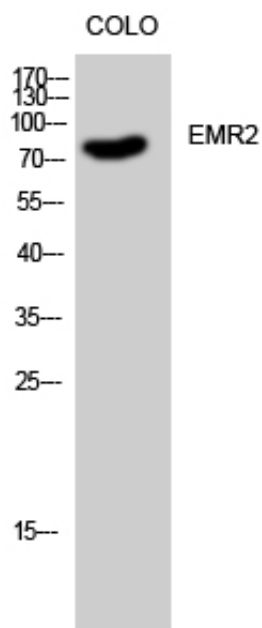


EMR2 Polyclonal Antibody

Catalog_no :	AT1546
Applications :	WB,IF,ELISA
Reactivity :	Human
Category :	抗原抗体
Size :	100µg/50µg/20µg
Gene_name :	EMR2
Protein_name :	EGF-like module-containing mucin-like hormone receptor-like 2
Humangene_id :	30817
Humanswissprot_no :	Q9UHX3
Immunogen :	The antiserum was produced against synthesized peptide derived from human EMR2. AA range:765-814
Specificity :	EMR2 Polyclonal Antibody detects endogenous levels of EMR2 protein.
Formulation :	Liquid in PBS containing 50% glycerol, 0.5% BSA and 0.02% sodium azide.
Source :	Rabbit
Dilution :	Western Blot: 1/500 - 1/2000. Immunofluorescence: 1/200 - 1/1000. ELISA: 1/20000. Not yet tested in other applications.
Purification :	The antibody was affinity-purified from rabbit antiserum by affinity-chromatography using epitope-specific immunogen.
Concentration :	1 mg/ml
Storage_stability :	-20°C/1 year
Msds :	MSDS_Antibody.pdf
Other_name :	EMR2; EGF-like module-containing mucin-like hormone receptor-like 2; EGF-like module receptor 2; CD antigen CD312
Molecular Weight :	85KD

Product Images



Western Blot analysis of COLO cells using EMR2 Polyclonal Antibody