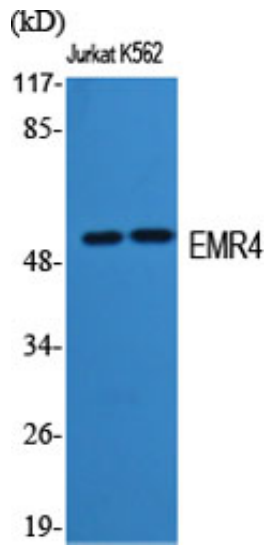


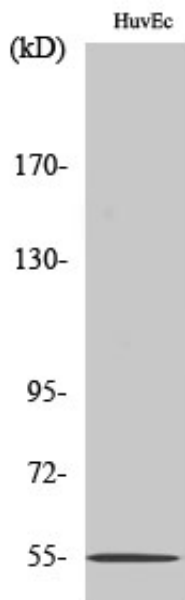
EMR4 Polyclonal Antibody

Catalog_no :	AT1548
Applications :	WB,IF,ELISA
Reactivity :	Human,Monkey
Category :	抗原抗体
Size :	100µg/50µg/20µg
Gene_name :	EMR4P
Protein_name :	Putative EGF-like module-containing mucin-like hormone receptor-like 4
Humangene_id :	326342
Humanswissprot_no :	Q86SQ3
Immunogen :	The antiserum was produced against synthesized peptide derived from human EMR4P. AA range:101-150
Specificity :	EMR4 Polyclonal Antibody detects endogenous levels of EMR4 protein.
Formulation :	Liquid in PBS containing 50% glycerol, 0.5% BSA and 0.02% sodium azide.
Source :	Rabbit
Dilution :	Western Blot: 1/500 - 1/2000. Immunofluorescence: 1/200 - 1/1000. ELISA: 1/20000. Not yet tested in other applications.
Purification :	The antibody was affinity-purified from rabbit antiserum by affinity-chromatography using epitope-specific immunogen.
Concentration :	1 mg/ml
Storage_stability :	-20°C/1 year
Msds :	MSDS_Antibody.pdf
Other_name :	EMR4P; EMR4; GPR127; PGR16; Putative EGF-like module-containing mucin-like hormone receptor-like 4; EGF-like module receptor 4; G-protein coupled receptor 127; G-protein coupled receptor PGR16
Molecular Weight :	55KD

Product Images



Western Blot analysis of various cells using EMR4 Polyclonal Antibody



Western Blot analysis of COLO205 cells using EMR4 Polyclonal Antibody