



ENaC β Polyclonal Antibody

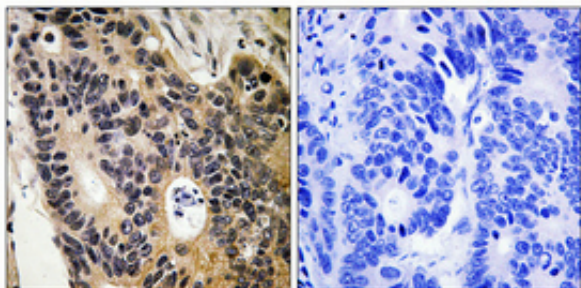
Catalog_no :	<u>AT1551</u>
Applications :	<u>IHC-p,IF,WB,ELISA</u>
Reactivity :	<u>Human,Mouse,Rat</u>
Category :	<u>抗原抗体</u>
Size :	<u>100μg/50μg/20μg</u>
Gene_name :	<u>SCNN1B</u>
Protein_name :	<u>Amiloride-sensitive sodium channel subunit beta</u>
Humangene_id :	<u>6338</u>
Humanswissprot_no :	<u>P51168</u>
Mousegene_id :	<u>20277</u>
Mouseswissprot_no :	<u>Q9WU38</u>
Ratgene_id :	<u>24767</u>
Ratswissprot_no :	<u>P37090</u>
Immunogen :	<u>The antiserum was produced against synthesized peptide derived from human Nonvoltage-gated Sodium Channel 1. AA range:581-630</u>
Specificity :	<u>ENaC β Polyclonal Antibody detects endogenous levels of ENaC β protein.</u>
Formulation :	<u>Liquid in PBS containing 50% glycerol, 0.5% BSA and 0.02% sodium azide.</u>
Source :	<u>Rabbit</u>
Dilution :	<u>WB 1:500-2000 Immunohistochemistry: 1/100 - 1/300. Immunofluorescence: 1/200 - 1/1000. ELISA: 1/20000. Not yet tested in other applications.</u>
Purification :	<u>The antibody was affinity-purified from rabbit antiserum by affinity-chromatography using epitope-specific immunogen.</u>
Concentration :	<u>1 mg/ml</u>
Storage_stability :	<u>-20°C/1 year</u>
Msds :	<u>MSDS_Antibody.pdf</u>



Other_name : SCNN1B; Amiloride-sensitive sodium channel subunit beta; Beta-NaCH; Epithelial Na(+) channel subunit beta; Beta-ENaC; ENaCB; Nonvoltage-gated sodium channel 1 subunit beta; SCNEB

Molecular Weight : 72KD

Product Images



Immunohistochemical analysis of paraffin-embedded Human colon cancer. Antibody was diluted at 1:100(4°,overnight). High-pressure and temperature Tris-EDTA,pH8.0 was used for antigen retrieval. Negative contrl (right) obtaned from antibody was pre-absorbed by immunogen peptide.