

Endophilin B2 Polyclonal Antibody

Catalog_no :	AT1558
Applications :	WB,IHC-p,ELISA
Reactivity :	Human,Mouse,Rat,Monkey
Category :	抗原抗体
Size :	100µg/50µg/20µg
Gene_name :	SH3GLB2
Protein_name :	Endophilin-B2
Humangene_id :	56904
Humanswissprot_no :	Q9NR46
Mousegene_id :	227700
Mouseswissprot_no :	Q8R3V5
Ratgene_id :	311848
Ratswissprot_no :	Q5PPJ9
Immunogen :	The antiserum was produced against synthesized peptide derived from human SH3GLB2. AA range:131-180
Specificity :	Endophilin B2 Polyclonal Antibody detects endogenous levels of Endophilin B2 protein.
Formulation :	Liquid in PBS containing 50% glycerol, 0.5% BSA and 0.02% sodium azide.
Source :	Rabbit
Dilution :	Western Blot: 1/500 - 1/2000. Immunohistochemistry: 1/100 - 1/300. ELISA: 1/40000. Not yet tested in other applications.
Purification :	The antibody was affinity-purified from rabbit antiserum by affinity-chromatography using epitope-specific immunogen.
Concentration :	1 mg/ml
Storage_stability :	-20°C/1 year
Msds :	MSDS_Antibody.pdf

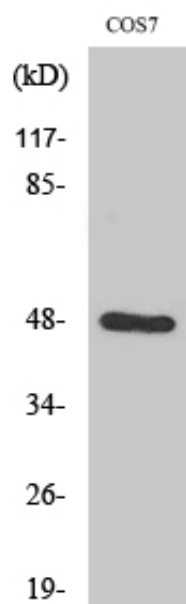


Other_name : SH3GLB2; KIAA1848; PP578; Endophilin-B2; SH3 domain-containing GRB2-like protein B2

Molecular Weight : 48KD

Weight :

Product Images



Western Blot analysis of various cells using Endophilin B2 Polyclonal Antibody diluted at 1 : 1000