

Enolase Polyclonal Antibody

Catalog_no :	AT1561
Applications :	WB,IHC-p,IF,ELISA
Reactivity :	Human,Mouse,Rat
Category :	抗原抗体
Size :	100µg/50µg/20µg
Gene_name :	ENO2
Protein_name :	Gamma-enolase
Humangene_id :	2026
Humanswissprot_no :	P09104
Mousegene_id :	13807
Mouseswissprot_no :	P17183
Ratgene_id :	1.00912e+008
Ratswissprot_no :	P07323
Immunogen :	The antiserum was produced against synthesized peptide derived from human NSE. AA range:371-420
Specificity :	Enolase Polyclonal Antibody detects endogenous levels of Enolase protein.
Formulation :	Liquid in PBS containing 50% glycerol, 0.5% BSA and 0.02% sodium azide.
Source :	Rabbit
Dilution :	Western Blot: 1/500 - 1/2000. Immunohistochemistry: 1/100 - 1/300. Immunofluorescence: 1/200 - 1/1000. ELISA: 1/10000. Not yet tested in other applications.
Purification :	The antibody was affinity-purified from rabbit antiserum by affinity-chromatography using epitope-specific immunogen.
Concentration :	1 mg/ml
Storage_stability :	-20°C/1 year

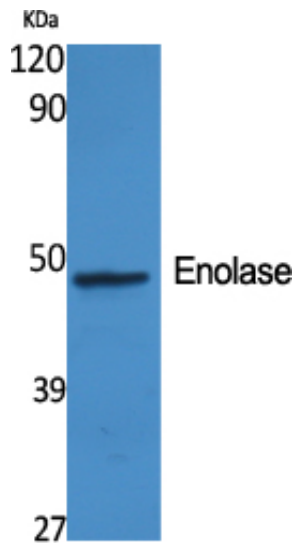


MsdS : MSDS_Antibody.pdf

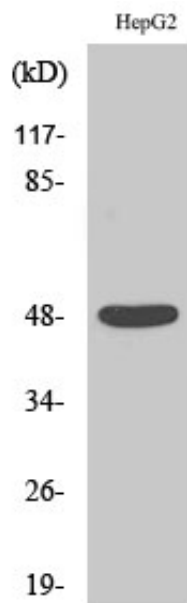
Other_name : ENO2; Gamma-enolase; 2-phospho-D-glycerate hydro-lyase; Enolase 2; Neural enolase; Neuron-specific enolase; NSE

Molecular Weight : 47KD

Product Images



Western Blot analysis of various cells using Enolase Polyclonal Antibody diluted at 1 : 2000



Western Blot analysis of HepG2 cells using Enolase Polyclonal Antibody diluted at 1 : 2000