

EP2 Polyclonal Antibody

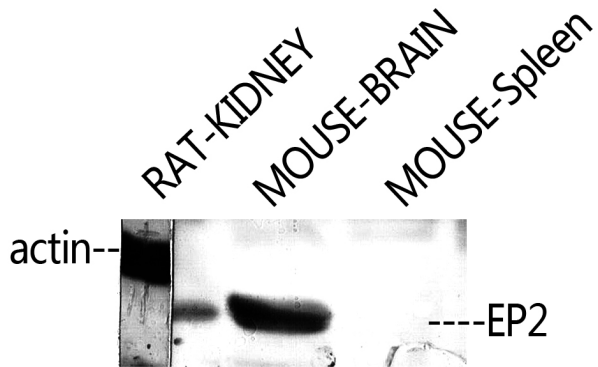
Catalog_no :	<u>AT1566</u>
Applications :	<u>WB,IF,ELISA</u>
Reactivity :	<u>Human,Mouse,Rat</u>
Category :	<u>抗原抗体</u>
Size :	<u>100µg/50µg/20µg</u>
Gene_name :	<u>PTGER2</u>
Protein_name :	<u>Prostaglandin E2 receptor EP2 subtype</u>
Humangene_id	<u>5732</u>
:	<u></u>
Humanswissprot	<u>P43116</u>
_no :	<u></u>
Mousegene_id :	<u>19217</u>
Mouseswissprot	<u>Q62053</u>
_no :	<u></u>
Ratgene_id :	<u>81752</u>
Ratswissprot_no	<u>Q62928</u>
:	<u></u>
Immunogen :	<u>The antiserum was produced against synthesized peptide derived from human PE2R2. AA range:261-310</u>
Specificity :	<u>EP2 Polyclonal Antibody detects endogenous levels of EP2 protein.</u>
Formulation :	<u>Liquid in PBS containing 50% glycerol, 0.5% BSA and 0.02% sodium azide.</u>
Source :	<u>Rabbit</u>
Dilution :	<u>Western Blot: 1/500 - 1/2000. Immunofluorescence: 1/200 - 1/1000. ELISA: 1/10000. Not yet tested in other applications.</u>
Purification :	<u>The antibody was affinity-purified from rabbit antiserum by affinity-chromatography using epitope-specific immunogen.</u>
Concentration :	<u>1 mg/ml</u>
Storage_stability	<u>-20°C/1 year</u>
:	<u></u>
Msds :	<u>MSDS_Antibody.pdf</u>



Other_name : PTGER2; Prostaglandin E2 receptor EP2 subtype; PGE receptor EP2 subtype; PGE2 receptor EP2 subtype; Prostanoid EP2 receptor

Molecular Weight : 40KD

Product Images



Western Blot analysis of RAT-KIDNEY MOUSE-BRAIN
MOUSE-HEART using EP2 Polyclonal Antibody. Antibody
was diluted at 1:2000