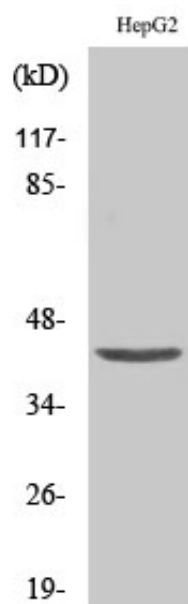




EP3 Polyclonal Antibody

Catalog_no :	AT1568
Applications :	WB,IF,ELISA
Reactivity :	Human
Category :	抗原抗体
Size :	100µg/50µg/20µg
Gene_name :	PTGER3
Protein_name :	Prostaglandin E2 receptor EP3 subtype
Humangene_id :	5733
Humanswissprot_no :	P43115
Immunogen :	The antiserum was produced against synthesized peptide derived from human PTGER3. AA range:16-65
Specificity :	EP3 Polyclonal Antibody detects endogenous levels of EP3 protein.
Formulation :	Liquid in PBS containing 50% glycerol, 0.5% BSA and 0.02% sodium azide.
Source :	Rabbit
Dilution :	Western Blot: 1/500 - 1/2000. Immunofluorescence: 1/200 - 1/1000. ELISA: 1/10000. Not yet tested in other applications.
Purification :	The antibody was affinity-purified from rabbit antiserum by affinity-chromatography using epitope-specific immunogen.
Concentration :	1 mg/ml
Storage_stability :	-20°C/1 year
Msds :	MSDS_Antibody.pdf
Other_name :	PTGER3; Prostaglandin E2 receptor EP3 subtype; PGE receptor EP3 subtype; PGE2 receptor EP3 subtype; PGE2-R; Prostanoid EP3 receptor
Molecular Weight :	43KD

Product Images



Western Blot analysis of various cells using EP3 Polyclonal Antibody