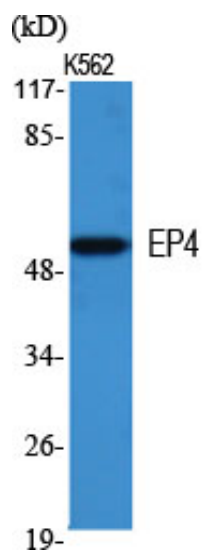


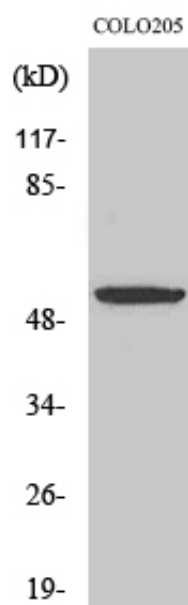
EP4 Polyclonal Antibody

Catalog_no :	AT1570
Applications :	WB,IF,ELISA
Reactivity :	Human
Category :	抗原抗体
Size :	100µg/50µg/20µg
Gene_name :	PTGER4
Protein_name :	Prostaglandin E2 receptor EP4 subtype
Humangene_id :	5734
Humanswissprot_no :	P35408
Immunogen :	The antiserum was produced against synthesized peptide derived from human PE2R4. AA range:321-370
Specificity :	EP4 Polyclonal Antibody detects endogenous levels of EP4 protein.
Formulation :	Liquid in PBS containing 50% glycerol, 0.5% BSA and 0.02% sodium azide.
Source :	Rabbit
Dilution :	Western Blot: 1/500 - 1/2000. Immunofluorescence: 1/200 - 1/1000. ELISA: 1/20000. Not yet tested in other applications.
Purification :	The antibody was affinity-purified from rabbit antiserum by affinity-chromatography using epitope-specific immunogen.
Concentration :	1 mg/ml
Storage_stability :	-20°C/1 year
Msds :	MSDS_Antibody.pdf
Other_name :	PTGER4; PTGER2; Prostaglandin E2 receptor EP4 subtype; PGE receptor EP4 subtype; PGE2 receptor EP4 subtype; Prostanoid EP4 receptor
Molecular Weight :	55KD

Product Images



Western Blot analysis of various cells using EP4 Polyclonal Antibody



Western Blot analysis of COLO205 cells using EP4 Polyclonal Antibody