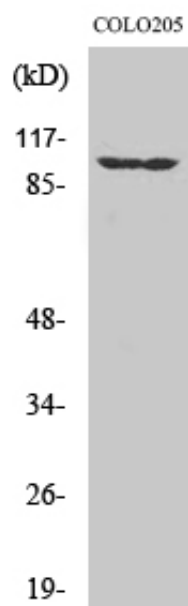


EphA1 Polyclonal Antibody

Catalog_no :	AT1573
Applications :	WB,IHC-p,IF,ELISA
Reactivity :	Human
Category :	抗原抗体
Size :	100µg/50µg/20µg
Gene_name :	EPHA1
Protein_name :	Ephrin type-A receptor 1
Humangene_id :	2041
Humanswissprot_no :	P21709
Immunogen :	The antiserum was produced against synthesized peptide derived from human EPHA1. AA range:541-590
Specificity :	EphA1 Polyclonal Antibody detects endogenous levels of EphA1 protein.
Formulation :	Liquid in PBS containing 50% glycerol, 0.5% BSA and 0.02% sodium azide.
Source :	Rabbit
Dilution :	Western Blot: 1/500 - 1/2000. Immunohistochemistry: 1/100 - 1/300. Immunofluorescence: 1/200 - 1/1000. ELISA: 1/20000. Not yet tested in other applications.
Purification :	The antibody was affinity-purified from rabbit antiserum by affinity-chromatography using epitope-specific immunogen.
Concentration :	1 mg/ml
Storage_stability :	-20°C/1 year
Msds :	MSDS_Antibody.pdf
Other_name :	EPHA1; EPH; EPHT; EPHT1; Ephrin type-A receptor 1; hEpha1; EPH tyrosine kinase; EPH tyrosine kinase 1; Erythropoietin-producing hepatoma receptor; Tyrosine-protein kinase receptor EPH
Molecular Weight :	108KD

Product Images



Western Blot analysis of various cells using EphA1 Polyclonal Antibody