

EphA3 Polyclonal Antibody

Catalog_no :	<u>AT1578</u>
Applications :	<u>WB,ELISA</u>
Reactivity :	<u>Human,Mouse,Rat</u>
Category :	<u>抗原抗体</u>
Size :	<u>100µg/50µg/20µg</u>
Gene_name :	<u>EPHA3</u>
Protein_name :	<u>Ephrin type-A receptor 3</u>
Humangene_id :	<u>2042</u>
Humanswissprot_no :	<u>P29320</u>
Mouseswissprot_no :	<u>P29319</u>
Ratgene_id :	<u>29210</u>
Ratswissprot_no :	<u>O08680</u>
Immunogen :	<u>The antiserum was produced against synthesized peptide derived from human EPHA3. AA range:831-880</u>
Specificity :	<u>EphA3 Polyclonal Antibody detects endogenous levels of EphA3 protein.</u>
Formulation :	<u>Liquid in PBS containing 50% glycerol, 0.5% BSA and 0.02% sodium azide.</u>
Source :	<u>Rabbit</u>
Dilution :	<u>Western Blot: 1/500 - 1/2000. ELISA: 1/40000. Not yet tested in other applications.</u>
Purification :	<u>The antibody was affinity-purified from rabbit antiserum by affinity-chromatography using epitope-specific immunogen.</u>
Concentration :	<u>1 mg/ml</u>
Storage_stability :	<u>-20°C/1 year</u>
Msds :	<u>MSDS_Antibody.pdf</u>
Other_name :	<u>EPHA3; ETK; ETK1; HEK; TYRO4; Ephrin type-A receptor 3; EPH-like kinase 4; EK4; hEK4; HEK; Human embryo kinase; Tyrosine-protein kinase TYRO4; Tyrosine-protein kinase</u>

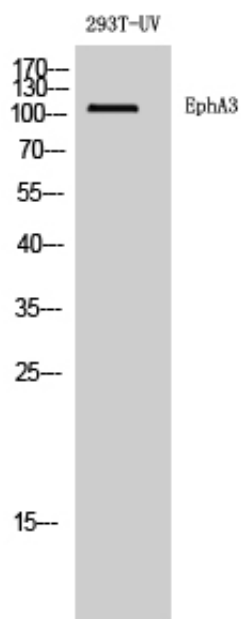


receptor ETK1; Eph-like tyrosine kinase 1

Molecular
Weight :

120KD

Product Images



Western Blot analysis of 293T-UV cells using EphA3
Polyclonal Antibody diluted at 1 : 500