

EphA5 Polyclonal Antibody

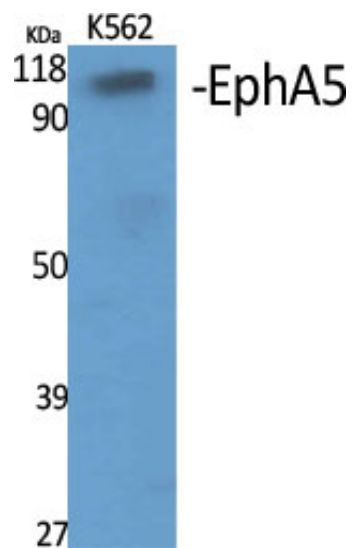
Catalog_no :	AT1579
Applications :	WB,ELISA
Reactivity :	Human,Mouse,Rat
Category :	抗原抗体
Size :	100µg/50µg/20µg
Gene_name :	EPHA5
Protein_name :	Ephrin type-A receptor 5
Humangene_id :	2044
Humanswissprot_no :	P54756
Mousegene_id :	13839
Mouseswissprot_no :	Q60629
Ratgene_id :	79208
Ratswissprot_no :	P54757
Immunogen :	The antiserum was produced against synthesized peptide derived from human EPHA5. AA range:471-520
Specificity :	EphA5 Polyclonal Antibody detects endogenous levels of EphA5 protein.
Formulation :	Liquid in PBS containing 50% glycerol, 0.5% BSA and 0.02% sodium azide.
Source :	Rabbit
Dilution :	Western Blot: 1/500 - 1/2000. ELISA: 1/20000. Not yet tested in other applications.
Purification :	The antibody was affinity-purified from rabbit antiserum by affinity-chromatography using epitope-specific immunogen.
Concentration :	1 mg/ml
Storage_stability :	-20°C/1 year
Msds :	MSDS_Antibody.pdf



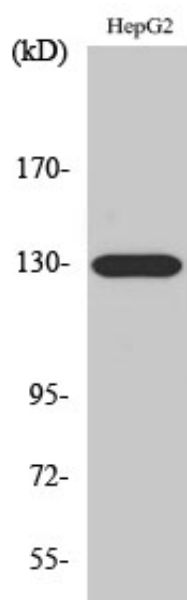
Other_name : EPHA5; BSK; EHK1; HEK7; TYRO4; Ephrin type-A receptor 5; Brain-specific kinase; EPH
homology kinase 1; EHK-1; EPH-like kinase 7; EK7; hEK7

Molecular Weight : 110KD

Product Images



Western Blot analysis of various cells using EphA5 Polyclonal Antibody



Western Blot analysis of A549 cells using EphA5 Polyclonal Antibody