



EphB1/2 Polyclonal Antibody

Catalog_no :	<u>AT1583</u>
Applications :	<u>WB,IHC-p,IF,ELISA</u>
Reactivity :	<u>Human,Mouse,Rat</u>
Category :	<u>抗原抗体</u>
Size :	<u>100µg/50µg/20µg</u>
Gene_name :	<u>EPHB1/EPHB2</u>
Protein_name :	<u>Ephrin type-B receptor 1/2</u>
Humangene_id :	<u>2047/1969</u>
Humanswissprot_no :	<u>P54762/P29323</u>
Mousegene_id :	<u>270190</u>
Ratgene_id :	<u>24338</u>
Ratswissprot_no :	<u>P09759</u>
Immunogen :	<u>The antiserum was produced against synthesized peptide derived from human EPHB1/2. AA range:561-610</u>
Specificity :	<u>EphB1/2 Polyclonal Antibody detects endogenous levels of EphB1/2 protein.</u>
Formulation :	<u>Liquid in PBS containing 50% glycerol, 0.5% BSA and 0.02% sodium azide.</u>
Source :	<u>Rabbit</u>
Dilution :	<u>Western Blot: 1/500 - 1/2000. Immunohistochemistry: 1/100 - 1/300. Immunofluorescence: 1/200 - 1/1000. ELISA: 1/40000. Not yet tested in other applications.</u>
Purification :	<u>The antibody was affinity-purified from rabbit antiserum by affinity-chromatography using epitope-specific immunogen.</u>
Concentration :	<u>1 mg/ml</u>
Storage_stability :	<u>-20°C/1 year</u>
Msds :	<u>MSDS_Antibody.pdf</u>
Other_name :	<u>EPHB1; ELK; EPHT2; HEK6; NET; Ephrin type-B receptor 1; ELK; EPH tyrosine kinase 2;</u>

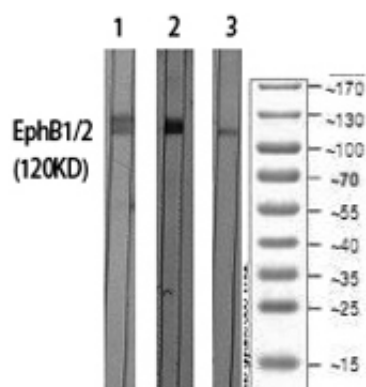


EPH-like kinase 6; EK6; hEK6; Neuronally-expressed EPH-related tyrosine kinase; NET;
Tyrosine-protein kinase receptor EPH-2; EPHB2; DRT; EPHT3; EPTH3; ERK;

Molecular
Weight :

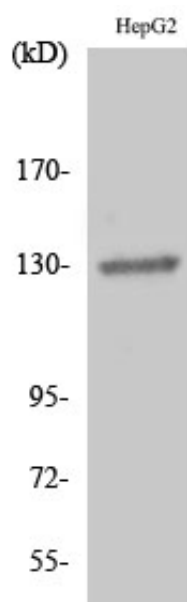
110KD

Product Images



- 1 PC-12 CELL
- 2 customer's samples
- 3 Hela cell

Western Blot analysis of various cells using EphB1/2 Polyclonal Antibody diluted at 1 : 500



Western Blot analysis of HepG2 cells using EphB1/2 Polyclonal Antibody diluted at 1 : 500