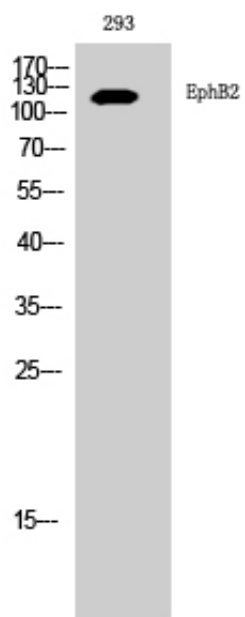


## EphB2 Polyclonal Antibody

Catalog_no :	AT1586
Applications :	WB,IHC-p,ELISA
Reactivity :	Human
Category :	抗原抗体
Size :	100µg/50µg/20µg
Gene_name :	EPHB2
Protein_name :	Ephrin type-B receptor 2
Humangene_id :	<a href="#">2048</a>
Humanswissprot_no :	<a href="#">P29323</a>
Immunogen :	The antiserum was produced against synthesized peptide derived from human EPHB2. AA range:991-1040
Specificity :	EphB2 Polyclonal Antibody detects endogenous levels of EphB2 protein.
Formulation :	Liquid in PBS containing 50% glycerol, 0.5% BSA and 0.02% sodium azide.
Source :	Rabbit
Dilution :	Western Blot: 1/500 - 1/2000. Immunohistochemistry: 1/100 - 1/300. ELISA: 1/5000. Not yet tested in other applications.
Purification :	The antibody was affinity-purified from rabbit antiserum by affinity-chromatography using epitope-specific immunogen.
Concentration :	1 mg/ml
Storage_stability :	-20°C/1 year
Msds :	<a href="#">MSDS_Antibody.pdf</a>
Other_name :	EPHB2; DRT; EPHT3; EPTH3; ERK; HEK5; TYRO5; Ephrin type-B receptor 2; Developmentally-regulated Eph-related tyrosine kinase; ELK-related tyrosine kinase; EPH tyrosine kinase 3; EPH-like kinase 5; EK5; hEK5; Renal carcinoma antigen NY-REN-47
Molecular Weight :	117KD

## Product Images



Western Blot analysis of 293 cells using EphB2  
Polyclonal Antibody diluted at 1 : 1000