

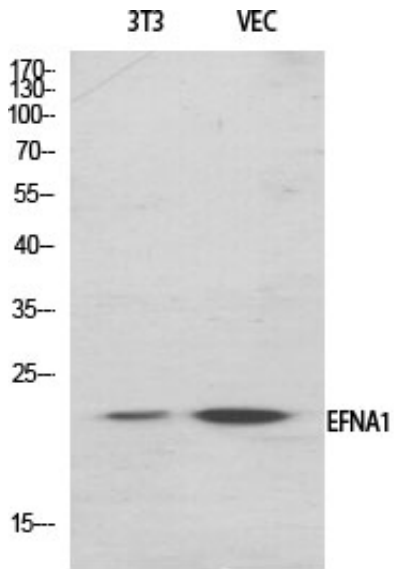
Ephrin-A1 Polyclonal Antibody

Catalog_no :	AT1589
Applications :	WB,IHC-p,IF,ELISA
Reactivity :	Human,Mouse,Rat
Category :	抗原抗体
Size :	100µg/50µg/20µg
Gene_name :	EFNA1
Protein_name :	Ephrin-A1
Humangene_id :	1942
Humanswissprot_no :	P20827
Mousegene_id :	13636
Mouseswissprot_no :	P52793
Ratgene_id :	94268
Ratswissprot_no :	P97553
Immunogen :	The antiserum was produced against synthesized peptide derived from human EFNA1. AA range:66-115
Specificity :	Ephrin-A1 Polyclonal Antibody detects endogenous levels of Ephrin-A1 protein.
Formulation :	Liquid in PBS containing 50% glycerol, 0.5% BSA and 0.02% sodium azide.
Source :	Rabbit
Dilution :	Western Blot: 1/500 - 1/2000. Immunohistochemistry: 1/100 - 1/300. Immunofluorescence: 1/200 - 1/1000. ELISA: 1/10000. Not yet tested in other applications.
Purification :	The antibody was affinity-purified from rabbit antiserum by affinity-chromatography using epitope-specific immunogen.
Concentration :	1 mg/ml
Storage_stability :	-20°C/1 year

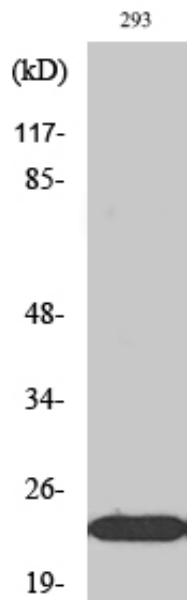


MsdS :	MSDS_Antibody.pdf
Other_name :	EFNA1; EPLG1; LERK1; TNFAIP4; Ephrin-A1; EPH-related receptor tyrosine kinase ligand 1; LERK-1; Immediate early response protein B61; Tumor necrosis factor alpha-induced protein 4; TNF alpha-induced protein 4
Molecular Weight :	24KD

Product Images



Western Blot analysis of various cells using Ephrin-A1 Polyclonal Antibody diluted at 1 : 2000



Western Blot analysis of Jurkat cells using Ephrin-A1 Polyclonal Antibody diluted at 1 : 2000