



Ephrin-A2 Polyclonal Antibody

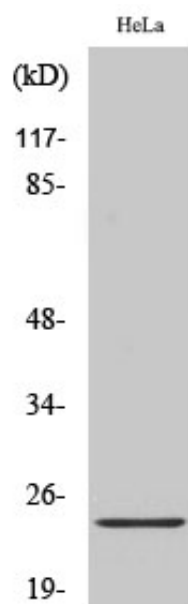
Catalog_no :	<u>AT1590</u>
Applications :	<u>WB,ELISA</u>
Reactivity :	<u>Human,Mouse</u>
Category :	<u>抗原抗体</u>
Size :	<u>100µg/50µg/20µg</u>
Gene_name :	<u>EFNA2</u>
Protein_name :	<u>Ephrin-A2</u>
Humangene_id :	<u>1943</u>
Humanswissprot_no :	<u>O43921</u>
Mousegene_id :	<u>13637</u>
Mouseswissprot_no :	<u>P52801</u>
Immunogen :	<u>The antiserum was produced against synthesized peptide derived from human EFNA2. AA range:1-50</u>
Specificity :	<u>Ephrin-A2 Polyclonal Antibody detects endogenous levels of Ephrin-A2 protein.</u>
Formulation :	<u>Liquid in PBS containing 50% glycerol, 0.5% BSA and 0.02% sodium azide.</u>
Source :	<u>Rabbit</u>
Dilution :	<u>Western Blot: 1/500 - 1/2000. ELISA: 1/20000. Not yet tested in other applications.</u>
Purification :	<u>The antibody was affinity-purified from rabbit antiserum by affinity-chromatography using epitope-specific immunogen.</u>
Concentration :	<u>1 mg/ml</u>
Storage_stability :	<u>-20°C/1 year</u>
Msds :	<u>MSDS_Antibody.pdf</u>
Other_name :	<u>EFNA2; EPLG6; LERK6; Ephrin-A2; EPH-related receptor tyrosine kinase ligand 6; LERK-6; HEK7 ligand; HEK7-L</u>
Molecular Weight :	<u>24KD</u>



专注二抗产品

Biodragon旗下品牌

Product Images



Western Blot analysis of various cells using Ephrin-A2 Polyclonal Antibody