

Ephrin-A3 Polyclonal Antibody

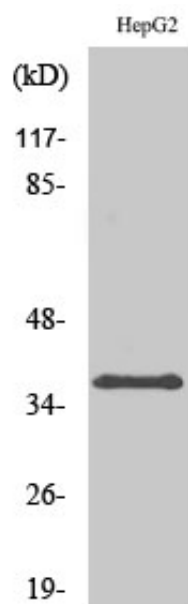
Catalog_no :	AT1591
Applications :	WB,IHC-p,IF,ELISA
Reactivity :	Human,Mouse,Rat
Category :	抗原抗体
Size :	100µg/50µg/20µg
Gene_name :	EFNA3
Protein_name :	Ephrin-A3
Humangene_id :	1944
Humanswissprot_no :	P52797
Mousegene_id :	13638
Mouseswissprot_no :	O08545
Immunogen :	The antiserum was produced against synthesized peptide derived from human EFNA3. AA range:161-210
Specificity :	Ephrin-A3 Polyclonal Antibody detects endogenous levels of Ephrin-A3 protein.
Formulation :	Liquid in PBS containing 50% glycerol, 0.5% BSA and 0.02% sodium azide.
Source :	Rabbit
Dilution :	Western Blot: 1/500 - 1/2000. Immunohistochemistry: 1/100 - 1/300. Immunofluorescence: 1/200 - 1/1000. ELISA: 1/10000. Not yet tested in other applications.
Purification :	The antibody was affinity-purified from rabbit antiserum by affinity-chromatography using epitope-specific immunogen.
Concentration :	1 mg/ml
Storage_stability :	-20°C/1 year
Msds :	MSDS_Antibody.pdf
Other_name :	EFNA3; EFL2; EPLG3; LERK3; Ephrin-A3; EFL-2; EHK1 ligand; EHK1-L; EPH-related receptor tyrosine kinase ligand 3; LERK-3



Molecular
Weight :

38KD

Product Images



Western Blot analysis of various cells using Ephrin-A3 Polyclonal Antibody