

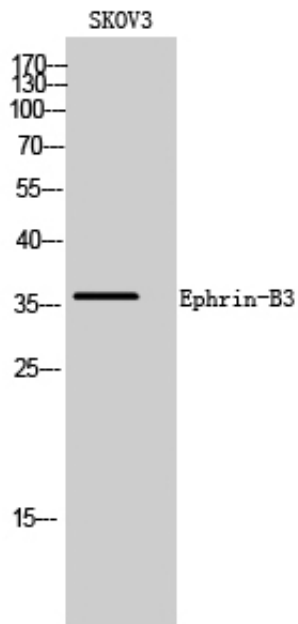
Ephrin-B3 Polyclonal Antibody

Catalog_no :	AT1596
Applications :	WB,IHC-p,ELISA
Reactivity :	Human,Mouse,Rat
Category :	抗原抗体
Size :	100µg/50µg/20µg
Gene_name :	EFNB3
Protein_name :	Ephrin-B3
Humangene_id :	1949
Humanswissprot_no :	Q15768
Mousegene_id :	13643
Mouseswissprot_no :	O35393
Immunogen :	The antiserum was produced against synthesized peptide derived from human EFNB3. AA range:221-270
Specificity :	Ephrin-B3 Polyclonal Antibody detects endogenous levels of Ephrin-B3 protein.
Formulation :	Liquid in PBS containing 50% glycerol, 0.5% BSA and 0.02% sodium azide.
Source :	Rabbit
Dilution :	Western Blot: 1/500 - 1/2000. Immunohistochemistry: 1/100 - 1/300. ELISA: 1/20000. Not yet tested in other applications.
Purification :	The antibody was affinity-purified from rabbit antiserum by affinity-chromatography using epitope-specific immunogen.
Concentration :	1 mg/ml
Storage_stability :	-20°C/1 year
Msds :	MSDS_Antibody.pdf
Other_name :	EFNB3; EPLG8; LERK8; Ephrin-B3; EPH-related receptor transmembrane ligand ELK-L3; EPH-related receptor tyrosine kinase ligand 8; LERK-8
Molecular	36KD



Weight :

Product Images



Western Blot analysis of SKOV3 cells using Ephrin-B3 Polyclonal Antibody