

Eps8L1 Polyclonal Antibody

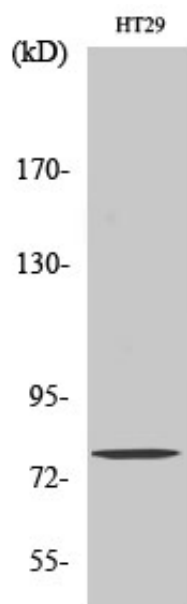
Catalog_no :	AT1598
Applications :	WB,IHC-p,IF,ELISA
Reactivity :	Human,Mouse
Category :	抗原抗体
Size :	100µg/50µg/20µg
Gene_name :	EPS8L1
Protein_name :	Epidermal growth factor receptor kinase substrate 8-like protein 1
Humangene_id :	54869
Humanswissprot_no :	Q8TE68
Mousegene_id :	67425
Mouseswissprot_no :	Q8R5F8
Immunogen :	The antiserum was produced against synthesized peptide derived from human ES8L1. AA range:411-460
Specificity :	Eps8L1 Polyclonal Antibody detects endogenous levels of Eps8L1 protein.
Formulation :	Liquid in PBS containing 50% glycerol, 0.5% BSA and 0.02% sodium azide.
Source :	Rabbit
Dilution :	Western Blot: 1/500 - 1/2000. Immunohistochemistry: 1/100 - 1/300. Immunofluorescence: 1/200 - 1/1000. ELISA: 1/20000. Not yet tested in other applications.
Purification :	The antibody was affinity-purified from rabbit antiserum by affinity-chromatography using epitope-specific immunogen.
Concentration :	1 mg/ml
Storage_stability :	-20°C/1 year
Msds :	MSDS_Antibody.pdf
Other_name :	EPS8L1; DRC3; EPS8R1; PP10566; Epidermal growth factor receptor kinase substrate 8-like protein 1; EPS8-like protein 1; Epidermal growth factor receptor pathway substrate 8-related protein 1; EPS8-related protein 1



Molecular
Weight :

80KD

Product Images



Western Blot analysis of various cells using Eps8L1 Polyclonal Antibody