

Eps8L2 Polyclonal Antibody

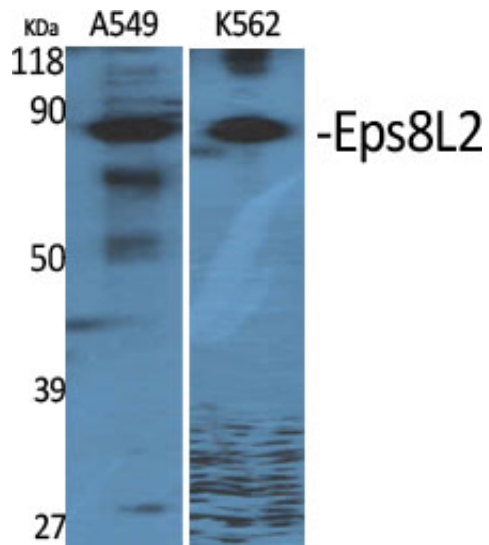
Catalog_no :	AT1599
Applications :	WB,IHC-p,IF,ELISA
Reactivity :	Human,Mouse
Category :	抗原抗体
Size :	100µg/50µg/20µg
Gene_name :	EPS8L2
Protein_name :	Epidermal growth factor receptor kinase substrate 8-like protein 2
Humangene_id :	64787
Humanswissprot_no :	Q9H6S3
Mousegene_id :	98845
Mouseswissprot_no :	Q99K30
Immunogen :	The antiserum was produced against synthesized peptide derived from human ES8L2. AA range:1-50
Specificity :	Eps8L2 Polyclonal Antibody detects endogenous levels of Eps8L2 protein.
Formulation :	Liquid in PBS containing 50% glycerol, 0.5% BSA and 0.02% sodium azide.
Source :	Rabbit
Dilution :	Western Blot: 1/500 - 1/2000. Immunohistochemistry: 1/100 - 1/300. Immunofluorescence: 1/200 - 1/1000. ELISA: 1/40000. Not yet tested in other applications.
Purification :	The antibody was affinity-purified from rabbit antiserum by affinity-chromatography using epitope-specific immunogen.
Concentration :	1 mg/ml
Storage_stability :	-20°C/1 year
Msds :	MSDS_Antibody.pdf
Other_name :	EPS8L2; EPS8R2; PP13181; Epidermal growth factor receptor kinase substrate 8-like protein 2; EPS8-like protein 2; Epidermal growth factor receptor pathway substrate 8-related protein 2; EPS8-related protein 2



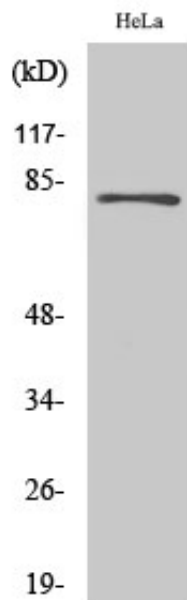
Molecular
Weight :

81KD

Product Images



Western Blot analysis of various cells using Eps8L2 Polyclonal Antibody



Western Blot analysis of HuvEc cells using Eps8L2 Polyclonal Antibody