

## Epsin 1 Polyclonal Antibody

Catalog_no :	<u>AT1601</u>
Applications :	<u>WB,ELISA</u>
Reactivity :	<u>Human,Mouse,Rat</u>
Category :	<u>抗原抗体</u>
Size :	<u>100µg/50µg/20µg</u>
Gene_name :	<u>EPN1</u>
Protein_name :	<u>Epsin-1</u>
Humangene_id :	<u><a href="#">29924</a></u>
Humanswissprot_no :	<u><a href="#">Q9Y6I3</a></u>
Mousegene_id :	<u><a href="#">13854</a></u>
Mouseswissprot_no :	<u><a href="#">Q80VP1</a></u>
Ratgene_id :	<u><a href="#">117277</a></u>
Ratswissprot_no :	<u><a href="#">O88339</a></u>
Immunogen :	<u>Synthesized peptide derived from Epsin 1 . at AA range: 140-220</u>
Specificity :	<u>Epsin 1 Polyclonal Antibody detects endogenous levels of Epsin 1 protein.</u>
Formulation :	<u>Liquid in PBS containing 50% glycerol, 0.5% BSA and 0.02% sodium azide.</u>
Source :	<u>Rabbit</u>
Dilution :	<u>Western Blot: 1/500 - 1/2000. ELISA: 1/40000. Not yet tested in other applications.</u>
Purification :	<u>The antibody was affinity-purified from rabbit antiserum by affinity-chromatography using epitope-specific immunogen.</u>
Concentration :	<u>1 mg/ml</u>
Storage_stability :	<u>-20°C/1 year</u>
Msds :	<u><a href="#">MSDS_Antibody.pdf</a></u>
Other_name :	<u>EPN1; Epsin-1; EH domain-binding mitotic phosphoprotein; EPS-15-interacting protein 1</u>

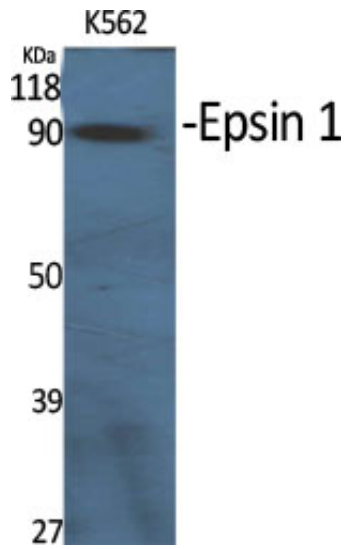


Molecular  
Weight :

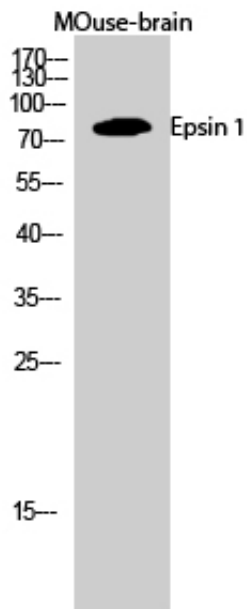
85KD

---

## Product Images



Western Blot analysis of various cells using Epsin 1 Polyclonal Antibody diluted at 1 : 1000



Western Blot analysis of MOuse-brain cells using Epsin 1 Polyclonal Antibody diluted at 1 : 1000