

ERAP1 Polyclonal Antibody

Catalog_no :	AT1606
Applications :	WB,IHC-p,IF,ELISA
Reactivity :	Human,Mouse,Rat
Category :	抗原抗体
Size :	100µg/50µg/20µg
Gene_name :	ERAP1
Protein_name :	Endoplasmic reticulum aminopeptidase 1
Humangene_id :	51752
Humanswissprot_no :	Q9NZ08
Mousegene_id :	80898
Mouseswissprot_no :	Q9EQH2
Ratgene_id :	80897
Ratswissprot_no :	Q9JJ22
Immunogen :	The antiserum was produced against synthesized peptide derived from human ARTS-1. AA range:441-490
Specificity :	ERAP1 Polyclonal Antibody detects endogenous levels of ERAP1 protein.
Formulation :	Liquid in PBS containing 50% glycerol, 0.5% BSA and 0.02% sodium azide.
Source :	Rabbit
Dilution :	Western Blot: 1/500 - 1/2000. Immunohistochemistry: 1/100 - 1/300. Immunofluorescence: 1/200 - 1/1000. ELISA: 1/20000. Not yet tested in other applications.
Purification :	The antibody was affinity-purified from rabbit antiserum by affinity-chromatography using epitope-specific immunogen.
Concentration :	1 mg/ml
Storage_stability :	-20°C/1 year

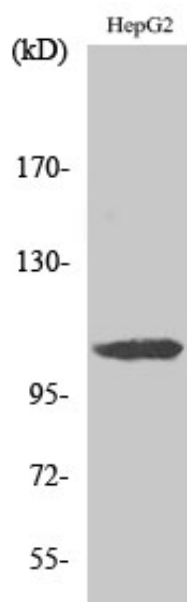


Msd : [MSDS_Antibody.pdf](#)

Other_name : ERAP1; APPILS; ARTS1; KIAA0525; Endoplasmic reticulum aminopeptidase 1; ARTS-1; Adipocyte-derived leucine aminopeptidase; A-LAP; Aminopeptidase PILS; Puromycin-insensitive leucyl-specific aminopeptidase; PILS-AP; Type 1 tumor necrosis facto

Molecular Weight : 107KD

Product Images



Western Blot analysis of various cells using ERAP1 Polyclonal Antibody diluted at 1 : 500