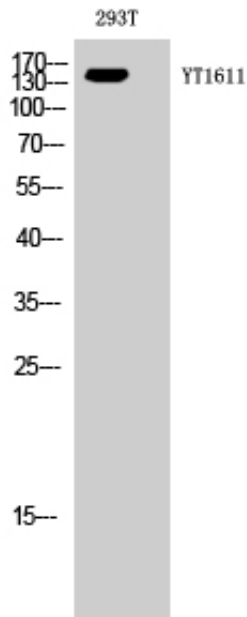


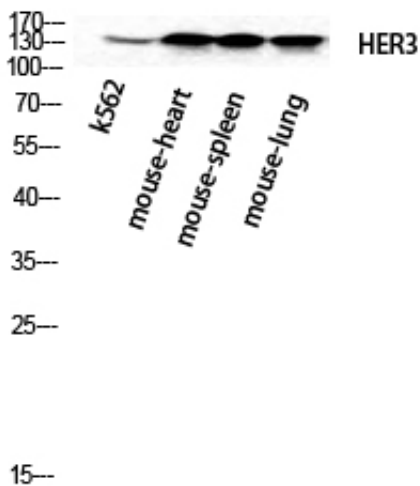
ErbB-3 Polyclonal Antibody

| | |
|---------------------|---|
| Catalog_no : | AT1611 |
| Applications : | WB,IHC-p,ELISA |
| Reactivity : | Human |
| Category : | 抗原抗体 |
| Size : | 100µg/50µg/20µg |
| Gene_name : | ERBB3 |
| Protein_name : | Receptor tyrosine-protein kinase erbB-3 |
| Humangene_id : | 2065 |
| Humanswissprot_no : | P21860 |
| Immunogen : | The antiserum was produced against synthesized peptide derived from human HER3. AA range:1-50 |
| Specificity : | ErbB-3 Polyclonal Antibody detects endogenous levels of ErbB-3 protein. |
| Formulation : | Liquid in PBS containing 50% glycerol, 0.5% BSA and 0.02% sodium azide. |
| Source : | Rabbit |
| Dilution : | Western Blot: 1/500 - 1/2000. Immunohistochemistry: 1/100 - 1/300. ELISA: 1/20000. Not yet tested in other applications. |
| Purification : | The antibody was affinity-purified from rabbit antiserum by affinity-chromatography using epitope-specific immunogen. |
| Concentration : | 1 mg/ml |
| Storage_stability : | -20°C/1 year |
| Msds : | MSDS_Antibody.pdf |
| Other_name : | ERBB3; HER3; Receptor tyrosine-protein kinase erbB-3; Proto-oncogene-like protein c-ErbB-3; Tyrosine kinase-type cell surface receptor HER3 |
| Molecular Weight : | 148KD |

Product Images



Western Blot analysis of 293T cells using ErbB-3 Polyclonal Antibody diluted at 1 : 2000 cells nucleus extracted by Minute TM Cytoplasmic and Nuclear Fractionation kit (SC-003, Inventbiotech, MN, USA).



Western Blot analysis of k562 mouse-heart mouse-spleen mouse-lung cells using ErbB-3 Polyclonal Antibody diluted at 1 : 2000 cells nucleus extracted by Minute TM Cytoplasmic and Nuclear Fractionation kit (SC-003, Inventbiotech, MN, USA).