



## EWS Polyclonal Antibody

Catalog_no :	AT1645
Applications :	WB,ELISA
Reactivity :	Human,Mouse,Rat
Category :	抗原抗体
Size :	100µg/50µg/20µg
Gene_name :	EWSR1
Protein_name :	RNA-binding protein EWS
Humangene_id :	<a href="#">2130</a>
Humanswissprot_no :	<a href="#">Q01844</a>
Mousegene_id :	<a href="#">14030</a>
Mouseswissprot_no :	<a href="#">Q61545</a>
Immunogen :	The antiserum was produced against synthesized peptide derived from human EWSR1. AA range:403-452
Specificity :	EWS Polyclonal Antibody detects endogenous levels of EWS protein.
Formulation :	Liquid in PBS containing 50% glycerol, 0.5% BSA and 0.02% sodium azide.
Source :	Rabbit
Dilution :	Western Blot: 1/500 - 1/2000. ELISA: 1/10000. Not yet tested in other applications.
Purification :	The antibody was affinity-purified from rabbit antiserum by affinity-chromatography using epitope-specific immunogen.
Concentration :	1 mg/ml
Storage_stability :	-20°C/1 year
Msds :	<a href="#">MSDS_Antibody.pdf</a>
Other_name :	EWSR1; EWS; RNA-binding protein EWS; EWS oncogene; Ewing sarcoma breakpoint region 1 protein
Molecular Weight :	68KD

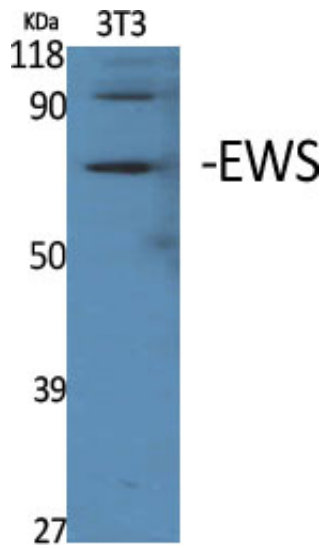


**专注二抗产品**

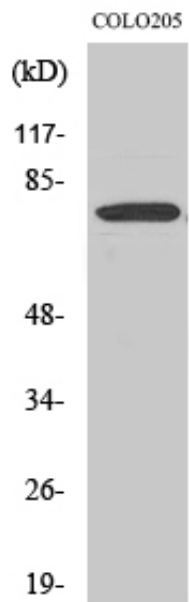
Biodragon旗下品牌

---

## Product Images



Western Blot analysis of various cells using EWS Polyclonal Antibody



Western Blot analysis of COLO205 cells using EWS Polyclonal Antibody