

## FAM80A Polyclonal Antibody

Catalog_no :	AT1672
Applications :	WB,ELISA
Reactivity :	Human,Mouse,Monkey
Category :	抗原抗体
Size :	100µg/50µg/20µg
Gene_name :	RIMKLA
Protein_name :	N-acetylaspartyl-glutamate synthetase A
Humangene_id :	<a href="#">284716</a>
Humanswissprot_no :	<a href="#">Q8IXN7</a>
Mousegene_id :	<a href="#">194237</a>
Mouseswissprot_no :	<a href="#">Q6PFX8</a>
Immunogen :	The antiserum was produced against synthesized peptide derived from human RIMKA. AA range:112-161
Specificity :	FAM80A Polyclonal Antibody detects endogenous levels of FAM80A protein.
Formulation :	Liquid in PBS containing 50% glycerol, 0.5% BSA and 0.02% sodium azide.
Source :	Rabbit
Dilution :	Western Blot: 1/500 - 1/2000. ELISA: 1/20000. Not yet tested in other applications.
Purification :	The antibody was affinity-purified from rabbit antiserum by affinity-chromatography using epitope-specific immunogen.
Concentration :	1 mg/ml
Storage_stability :	-20°C/1 year
Msds :	MSDS_Antibody.pdf
Other_name :	RIMKLA; FAM80A; N-acetylaspartyl-glutamate synthetase A; NAAG synthetase A; NAAGS; Ribosomal protein S6 modification-like protein A
Molecular Weight :	43KD

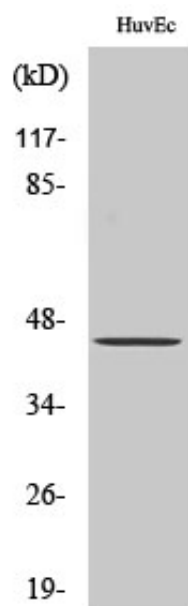


**专注二抗产品**

Biodragon旗下品牌

---

## Product Images



Western Blot analysis of various cells using FAM80A Polyclonal Antibody