

## FAM80B Polyclonal Antibody

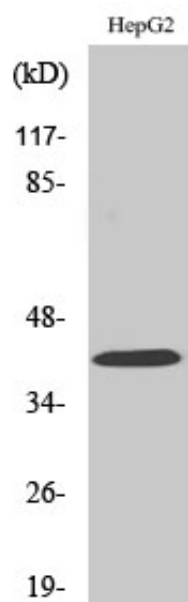
|                     |  |
|---------------------|--|
| Catalog_no :        | AT1673   |
| Applications :      | WB,ELISA   |
| Reactivity :        | Human,Mouse,Rat,Monkey   |
| Category :          | 抗原抗体   |
| Size :              | 100µg/50µg/20µg  |
| Gene_name :         | RIMKLB   |
| Protein_name :      | Beta-citryl-glutamate synthase B   |
| Humangene_id :      | <a href="#">57494</a>  |
| Humanswissprot_no : | <a href="#">Q9ULI2</a>   |
| Mousegene_id :      | <a href="#">108653</a>   |
| Mouseswissprot_no : | <a href="#">Q80WS1</a>   |
| Immunogen :         | The antiserum was produced against synthesized peptide derived from human RIMKB. AA range:177-226  |
| Specificity :       | FAM80B Polyclonal Antibody detects endogenous levels of FAM80B protein.  |
| Formulation :       | Liquid in PBS containing 50% glycerol, 0.5% BSA and 0.02% sodium azide.  |
| Source :            | Rabbit   |
| Dilution :          | Western Blot: 1/500 - 1/2000. ELISA: 1/5000. Not yet tested in other applications.   |
| Purification :      | The antibody was affinity-purified from rabbit antiserum by affinity-chromatography using epitope-specific immunogen.  |
| Concentration :     | 1 mg/ml  |
| Storage_stability : | -20°C/1 year   |
| Msds :              | MSDS_Antibody.pdf  |
| Other_name :        | RIMKLB; FAM80B; KIAA1238; Beta-citryl-glutamate synthase B; N-acetyl-aspartyl-glutamate synthetase B; NAAG synthetase B; NAAGS; Ribosomal protein S6 modification-like protein B |
| Molecular           | 42KD   |



Weight :

---

## Product Images



Western Blot analysis of various cells using FAM80B Polyclonal Antibody diluted at 1 : 500