

FANCD2 Polyclonal Antibody

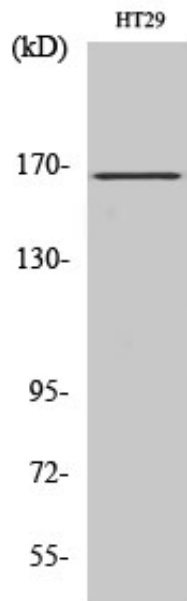
Catalog_no :	AT1675
Applications :	WB,IHC-p,ELISA
Reactivity :	Human,Mouse,Rat
Category :	抗原抗体
Size :	100µg/50µg/20µg
Gene_name :	FANCD2
Protein_name :	Fanconi anemia group D2 protein
Humangene_id :	2177
Humanswissprot_no :	Q9BXW9
Mousegene_id :	211651
Mouseswissprot_no :	Q80V62
Ratgene_id :	312641
Ratswissprot_no :	Q6IV68
Immunogen :	The antiserum was produced against synthesized peptide derived from human FANCD2. AA range:188-237
Specificity :	FANCD2 Polyclonal Antibody detects endogenous levels of FANCD2 protein.
Formulation :	Liquid in PBS containing 50% glycerol, 0.5% BSA and 0.02% sodium azide.
Source :	Rabbit
Dilution :	Western Blot: 1/500 - 1/2000. Immunohistochemistry: 1/100 - 1/300. ELISA: 1/10000. Not yet tested in other applications.
Purification :	The antibody was affinity-purified from rabbit antiserum by affinity-chromatography using epitope-specific immunogen.
Concentration :	1 mg/ml
Storage_stability :	-20°C/1 year
Msds :	MSDS_Antibody.pdf



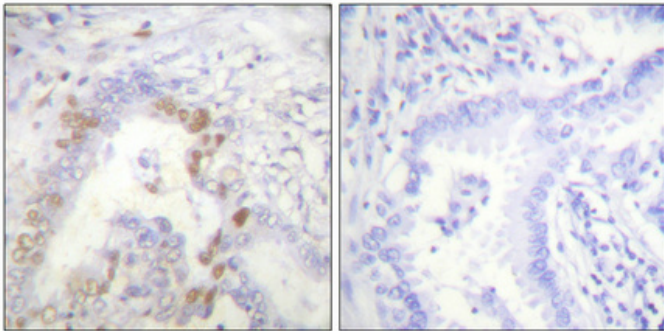
Other_name : FANCD2; FACD; Fanconi anemia group D2 protein; Protein FACD2

Molecular Weight : 166KD

Product Images



Western Blot analysis of various cells using FANCD2 Polyclonal Antibody diluted at 1 : 500 cells nucleus extracted by Minute TM Cytoplasmic and Nuclear Fractionation kit (SC-003, Inventbiotech, MN, USA).



Immunohistochemical analysis of paraffin-embedded Human lung cancer. Antibody was diluted at 1:100(4°, overnight). High-pressure and temperature Tris-EDTA, pH8.0 was used for antigen retrieval. Negative control (right) obtained from antibody was pre-absorbed by immunogen peptide.