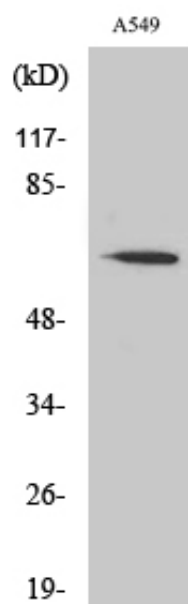


FAST Polyclonal Antibody

Catalog_no :	AT1678
Applications :	WB,ELISA
Reactivity :	Human,Mouse,Rat
Category :	抗原抗体
Size :	100µg/50µg/20µg
Gene_name :	FASTK
Protein_name :	Fas-activated serine/threonine kinase
Humangene_id :	10922
Humanswissprot_no :	Q14296
Mouseswissprot_no :	Q9JIX9
Immunogen :	The antiserum was produced against synthesized peptide derived from human FAST. AA range:361-410
Specificity :	FAST Polyclonal Antibody detects endogenous levels of FAST protein.
Formulation :	Liquid in PBS containing 50% glycerol, 0.5% BSA and 0.02% sodium azide.
Source :	Rabbit
Dilution :	Western Blot: 1/500 - 1/2000. ELISA: 1/20000. Not yet tested in other applications.
Purification :	The antibody was affinity-purified from rabbit antiserum by affinity-chromatography using epitope-specific immunogen.
Concentration :	1 mg/ml
Storage_stability :	-20°C/1 year
Msds :	MSDS_Antibody.pdf
Other_name :	FASTK; Fas-activated serine/threonine kinase; FAST kinase
Molecular Weight :	61KD

Product Images



Western Blot analysis of various cells using FAST Polyclonal Antibody