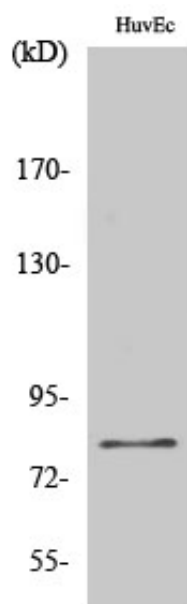


## FASTKD2 Polyclonal Antibody

Catalog_no :	AT1681
Applications :	WB,IHC-p,ELISA
Reactivity :	Human
Category :	抗原抗体
Size :	100µg/50µg/20µg
Gene_name :	FASTKD2
Protein_name :	FAST kinase domain-containing protein 2
Humangene_id :	<a href="#">22868</a>
Humanswissprot_no :	<a href="#">Q9NYY8</a>
Immunogen :	The antiserum was produced against synthesized peptide derived from human FAKD2. AA range:171-220
Specificity :	FASTKD2 Polyclonal Antibody detects endogenous levels of FASTKD2 protein.
Formulation :	Liquid in PBS containing 50% glycerol, 0.5% BSA and 0.02% sodium azide.
Source :	Rabbit
Dilution :	Western Blot: 1/500 - 1/2000. ELISA: 1/5000. Not yet tested in other applications.
Purification :	The antibody was affinity-purified from rabbit antiserum by affinity-chromatography using epitope-specific immunogen.
Concentration :	1 mg/ml
Storage_stability :	-20°C/1 year
Msds :	MSDS_Antibody.pdf
Other_name :	FASTKD2; KIAA0971; FAST kinase domain-containing protein 2
Molecular Weight :	81KD

## Product Images



Western Blot analysis of various cells using FASTKD2 Polyclonal Antibody