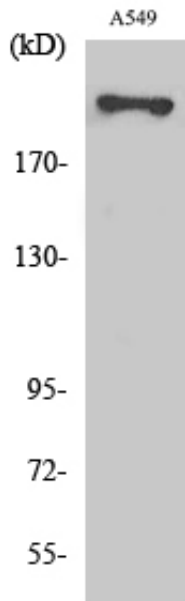


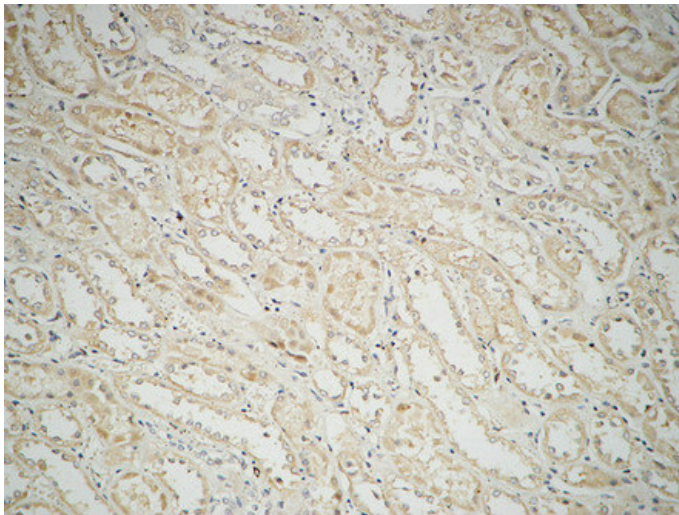
Fatty Acid Synthase Polyclonal Antibody

Catalog_no :	AT1683
Applications :	WB,IHC-p,ELISA
Reactivity :	Human
Category :	抗原抗体
Size :	100µg/50µg/20µg
Gene_name :	FASN
Protein_name :	Fatty acid synthase
Humangene_id :	2194
Humanswissprot_no :	P49327
Immunogen :	The antiserum was produced against synthesized peptide derived from human Fatty Acid Synthase. AA range:1478-1527
Specificity :	Fatty Acid Synthase Polyclonal Antibody detects endogenous levels of Fatty Acid Synthase protein.
Formulation :	Liquid in PBS containing 50% glycerol, 0.5% BSA and 0.02% sodium azide.
Source :	Rabbit
Dilution :	IHC-p: 100-300.Western Blot: 1/500 - 1/2000. ELISA: 1/10000. Not yet tested in other applications.
Purification :	The antibody was affinity-purified from rabbit antiserum by affinity-chromatography using epitope-specific immunogen.
Concentration :	1 mg/ml
Storage_stability :	-20°C/1 year
Msds :	MSDS_Antibody.pdf
Other_name :	FASN; FAS; Fatty acid synthase
Molecular Weight :	273KD

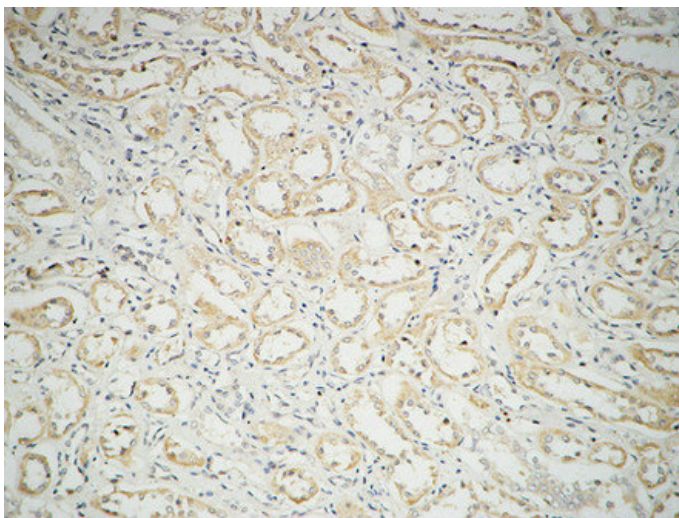
Product Images



Western Blot analysis of various cells using Fatty Acid Synthase Polyclonal Antibody diluted at 1 : 1000

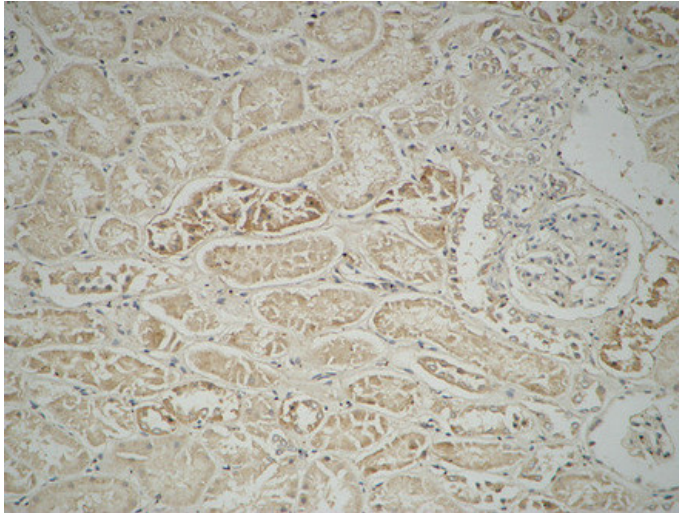


Immunohistochemical analysis of paraffin-embedded Human kidney. 1, Antibody was diluted at 1:100(4°, overnight). 2, High-pressure and temperature EDTA, pH8.0 was used for antigen retrieval. 3, Secondary antibody was diluted at 1:200(room temperature, 30min).



Immunohistochemical analysis of paraffin-embedded Human kidney. 1, Antibody was diluted at 1:100(4°, overnight). 2, High-pressure and temperature EDTA, pH8.0 was used for antigen retrieval. 3, Secondary antibody was diluted at 1:200(room temperature, 30min).

Immunohistochemical analysis of paraffin-embedded Human kidney. 1, Antibody was diluted at



1:100(4°,overnight). 2, High-pressure and temperature EDTA, pH8.0 was used for antigen retrieval. 3,Secondary antibody was diluted at 1:200(room temperature, 30min).