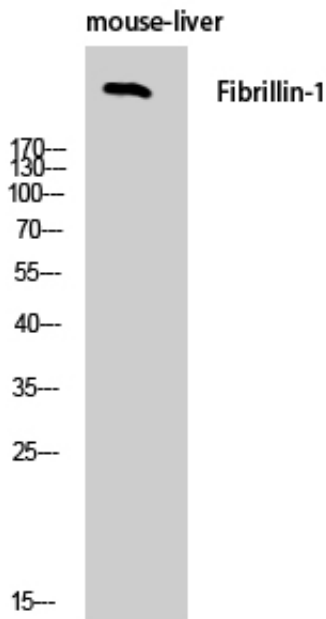




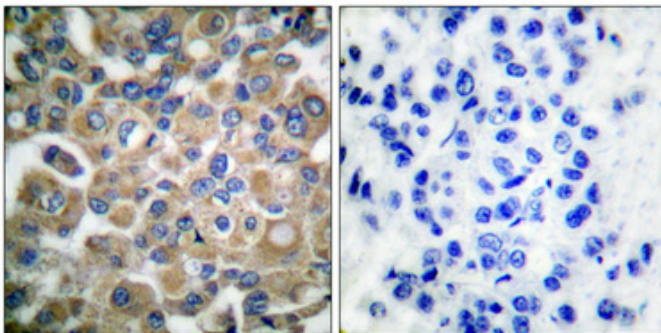
FBN1 Polyclonal Antibody

Catalog_no :	AT1684
Applications :	WB,IHC-p,ELISA
Reactivity :	Human,Mouse,Rat
Category :	抗原抗体
Size :	100µg/50µg/20µg
Gene_name :	FBN1
Protein_name :	Fibrillin-1
Humangene_id :	2200
Humanswissprot_no :	P35555
Mouseswissprot_no :	Q61554
Immunogen :	The antiserum was produced against synthesized peptide derived from human Fibrillin-1. AA range:2811-2860
Specificity :	FBN1 Polyclonal Antibody detects endogenous levels of FBN1 protein.
Formulation :	Liquid in PBS containing 50% glycerol, 0.5% BSA and 0.02% sodium azide.
Source :	Rabbit
Dilution :	Immunohistochemistry: 1/100 - 1/300. ELISA: 1/40000. Not yet tested in other applications.
Purification :	The antibody was affinity-purified from rabbit antiserum by affinity-chromatography using epitope-specific immunogen.
Concentration :	1 mg/ml
Storage_stability :	-20°C/1 year
Msds :	MSDS_Antibody.pdf
Other_name :	FBN1; FBN; Fibrillin-1

Product Images



Western Blot analysis of mouse-liver cells using FBN1 Polyclonal Antibody



Immunohistochemical analysis of paraffin-embedded Human breast cancer. Antibody was diluted at 1:100(4°, overnight). High-pressure and temperature Tris-EDTA, pH8.0 was used for antigen retrieval. Negative control (right) obtained from antibody was pre-absorbed by immunogen peptide.