

## FEN-1 Polyclonal Antibody

Catalog_no :	AT1689
Applications :	WB,IHC-p,IF,ELISA
Reactivity :	Human,Mouse,Rat
Category :	抗原抗体
Size :	100µg/50µg/20µg
Gene_name :	FEN1
Protein_name :	Flap endonuclease 1
Humangene_id :	<a href="#">2237</a>
Humanswissprot_no :	<a href="#">P39748</a>
Mouseswissprot_no :	<a href="#">P39749</a>
Ratgene_id :	<a href="#">84490</a>
Ratswissprot_no :	<a href="#">Q5XIP6</a>
Immunogen :	The antiserum was produced against synthesized peptide derived from human FEN1. AA range:86-135
Specificity :	FEN-1 Polyclonal Antibody detects endogenous levels of FEN-1 protein.
Formulation :	Liquid in PBS containing 50% glycerol, 0.5% BSA and 0.02% sodium azide.
Source :	Rabbit
Dilution :	Western Blot: 1/500 - 1/2000. Immunohistochemistry: 1/100 - 1/300. Immunofluorescence: 1/200 - 1/1000. ELISA: 1/20000. Not yet tested in other applications.
Purification :	The antibody was affinity-purified from rabbit antiserum by affinity-chromatography using epitope-specific immunogen.
Concentration :	1 mg/ml
Storage_stability :	-20°C/1 year
Msds :	<a href="#">MSDS_Antibody.pdf</a>



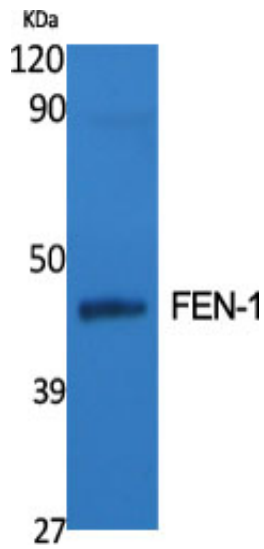
Other\_name : FEN1; RAD2; Flap endonuclease 1; FEN-1; DNase IV; Flap structure-specific endonuclease 1; Maturation factor 1; MF1; hFEN-1

---

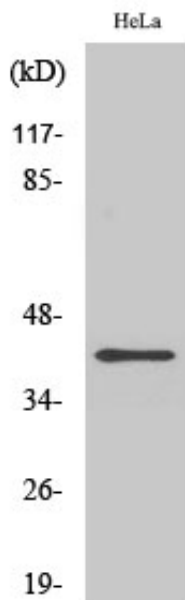
Molecular Weight : 42KD

---

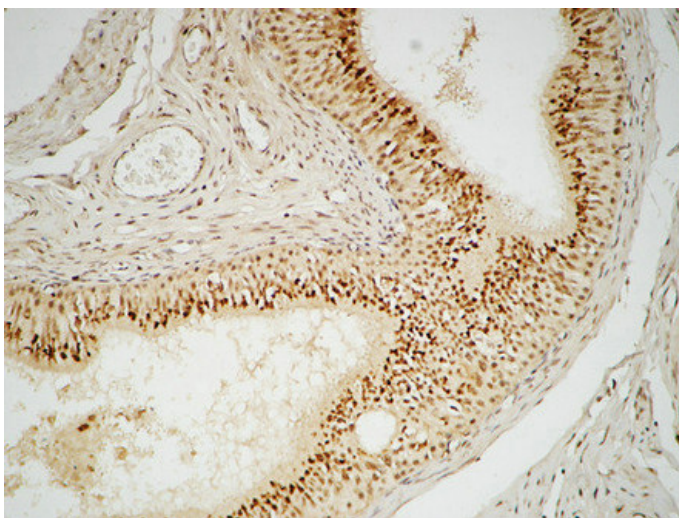
## Product Images



Western Blot analysis of various cells using FEN-1 Polyclonal Antibody diluted at 1 : 500

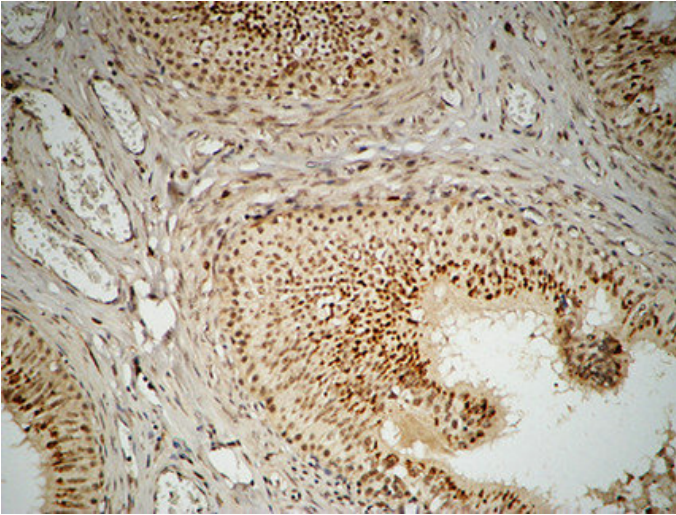


Western Blot analysis of HuvEc cells using FEN-1 Polyclonal Antibody diluted at 1 : 500

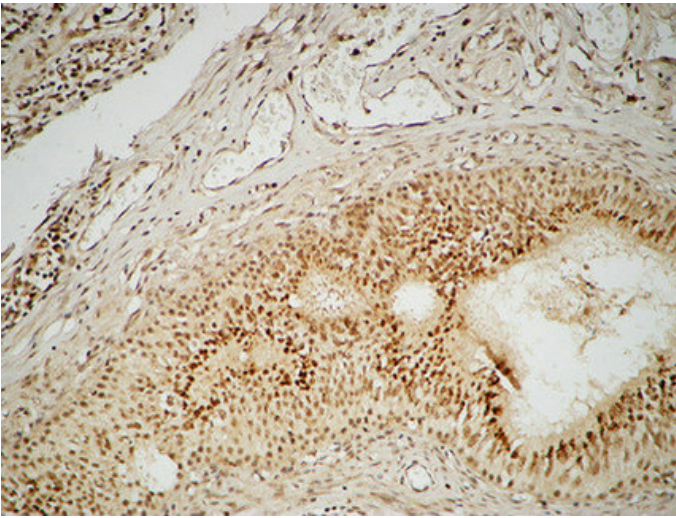


Immunohistochemical analysis of paraffin-embedded Human testis. 1, Antibody was diluted at 1:100(4°, overnight). 2, High-pressure and temperature EDTA, pH8.0 was used for antigen retrieval. 3, Secondary antibody was diluted at 1:200(room temperature, 30min).

Immunohistochemical analysis of paraffin-embedded



Human testis. 1, Antibody was diluted at 1:100(4°,overnight). 2, High-pressure and temperature EDTA, pH8.0 was used for antigen retrieval. 3,Secondary antibody was diluted at 1:200(room temperature, 30min).



Immunohistochemical analysis of paraffin-embedded Human testis. 1, Antibody was diluted at 1:100(4°,overnight). 2, High-pressure and temperature EDTA, pH8.0 was used for antigen retrieval. 3,Secondary antibody was diluted at 1:200(room temperature, 30min).