

## Fer Polyclonal Antibody

Catalog_no :	AT1690
Applications :	WB,IHC-p,IF,ELISA
Reactivity :	Human,Mouse,Rat
Category :	抗原抗体
Size :	100µg/50µg/20µg
Gene_name :	FER
Protein_name :	Tyrosine-protein kinase Fer
Humangene_id :	<a href="#">2241</a>
Humanswissprot_no :	<a href="#">P16591</a>
Mousegene_id :	<a href="#">14158</a>
Mouseswissprot_no :	<a href="#">P70451</a>
Ratswissprot_no :	<a href="#">P09760</a>
Immunogen :	The antiserum was produced against synthesized peptide derived from human FER. AA range:766-815
Specificity :	Fer Polyclonal Antibody detects endogenous levels of Fer protein.
Formulation :	Liquid in PBS containing 50% glycerol, 0.5% BSA and 0.02% sodium azide.
Source :	Rabbit
Dilution :	Western Blot: 1/500 - 1/2000. Immunohistochemistry: 1/100 - 1/300. Immunofluorescence: 1/200 - 1/1000. ELISA: 1/5000. Not yet tested in other applications.
Purification :	The antibody was affinity-purified from rabbit antiserum by affinity-chromatography using epitope-specific immunogen.
Concentration :	1 mg/ml
Storage_stability :	-20°C/1 year
Msds :	<a href="#">MSDS_Antibody.pdf</a>



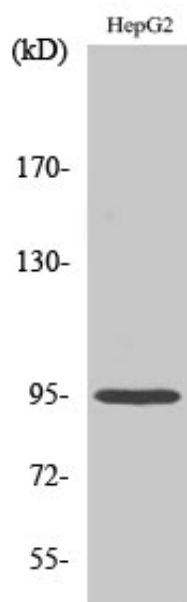
Other\_name : FER; TYK3; Tyrosine-protein kinase Fer; Feline encephalitis virus-related kinase FER; Fujinami poultry sarcoma/Feline sarcoma-related protein Fer; Proto-oncogene c-Fer; Tyrosine kinase 3; p94-Fer

---

Molecular Weight : 95KD

---

## Product Images



Western Blot analysis of various cells using Fer Polyclonal Antibody