

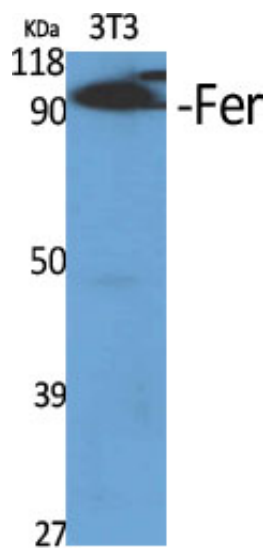
Fer Polyclonal Antibody

Catalog_no :	AT1691
Applications :	WB,ELISA
Reactivity :	Human,Mouse
Category :	抗原抗体
Size :	100µg/50µg/20µg
Gene_name :	FER
Protein_name :	Tyrosine-protein kinase Fer
Humangene_id :	2241
Humanswissprot_no :	P16591
Mousegene_id :	14158
Mouseswissprot_no :	P70451
Immunogen :	The antiserum was produced against synthesized peptide derived from human FER. AA range:371-420
Specificity :	Fer Polyclonal Antibody detects endogenous levels of Fer protein.
Formulation :	Liquid in PBS containing 50% glycerol, 0.5% BSA and 0.02% sodium azide.
Source :	Rabbit
Dilution :	Western Blot: 1/500 - 1/2000. ELISA: 1/40000. Not yet tested in other applications.
Purification :	The antibody was affinity-purified from rabbit antiserum by affinity-chromatography using epitope-specific immunogen.
Concentration :	1 mg/ml
Storage_stability :	-20°C/1 year
Msds :	MSDS_Antibody.pdf
Other_name :	FER; TYK3; Tyrosine-protein kinase Fer; Feline encephalitis virus-related kinase FER; Fujinami poultry sarcoma/Feline sarcoma-related protein Fer; Proto-oncogene c-Fer; Tyrosine kinase 3; p94-Fer
Molecular	85KD

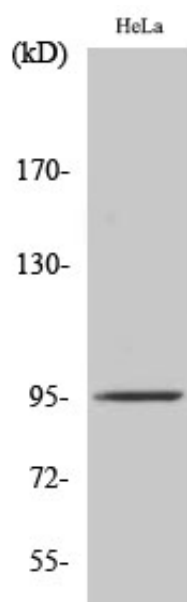


Weight :

Product Images



Western Blot analysis of various cells using Fer Polyclonal Antibody diluted at 1 : 500



Western Blot analysis of HeLa cells using Fer Polyclonal Antibody diluted at 1 : 500