

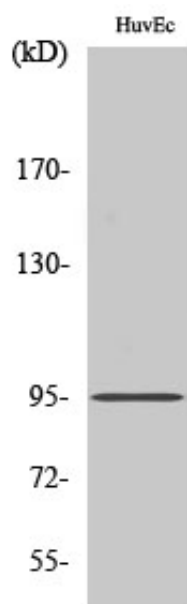
Fes Polyclonal Antibody

Catalog_no :	AT1693
Applications :	WB,IHC-p,ELISA
Reactivity :	Human,Mouse
Category :	抗原抗体
Size :	100µg/50µg/20µg
Gene_name :	FES
Protein_name :	Tyrosine-protein kinase Fes/Fps
Humangene_id :	2242
Humanswissprot_no :	P07332
Mousegene_id :	14159
Mouseswissprot_no :	P16879
Immunogen :	The antiserum was produced against synthesized peptide derived from human FES. AA range:131-180
Specificity :	Fes Polyclonal Antibody detects endogenous levels of Fes protein.
Formulation :	Liquid in PBS containing 50% glycerol, 0.5% BSA and 0.02% sodium azide.
Source :	Rabbit
Dilution :	Western Blot: 1/500 - 1/2000. Immunohistochemistry: 1/100 - 1/300. ELISA: 1/20000. Not yet tested in other applications.
Purification :	The antibody was affinity-purified from rabbit antiserum by affinity-chromatography using epitope-specific immunogen.
Concentration :	1 mg/ml
Storage_stability :	-20°C/1 year
Msds :	MSDS_Antibody.pdf
Other_name :	FES; FPS; Tyrosine-protein kinase Fes/Fps; Feline sarcoma/Fujinami avian sarcoma oncogene homolog; Proto-oncogene c-Fes; Proto-oncogene c-Fps; p93c-fes
Molecular	80KD



Weight :

Product Images



Western Blot analysis of various cells using Fes Polyclonal Antibody