

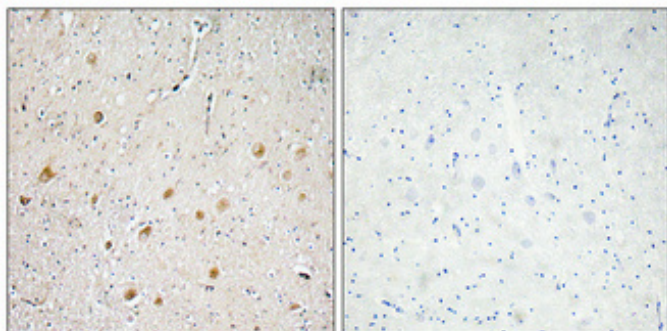
FGF-1 Polyclonal Antibody

Catalog_no :	AT1695
Applications :	IHC-p,ELISA
Reactivity :	Human,Mouse,Rat
Category :	抗原抗体
Size :	100µg/50µg/20µg
Gene_name :	FGF1
Protein_name :	Fibroblast growth factor 1
Humangene_id :	2246
Humanswissprot_no :	P05230
Mousegene_id :	14164
Mouseswissprot_no :	P61148
Ratgene_id :	25317
Ratswissprot_no :	P61149
Immunogen :	The antiserum was produced against synthesized peptide derived from human FGF-1. AA range:7-56
Specificity :	FGF-1 Polyclonal Antibody detects endogenous levels of FGF-1 protein.
Formulation :	Liquid in PBS containing 50% glycerol, 0.5% BSA and 0.02% sodium azide.
Source :	Rabbit
Dilution :	Immunohistochemistry: 1/100 - 1/300. ELISA: 1/10000. Not yet tested in other applications.
Purification :	The antibody was affinity-purified from rabbit antiserum by affinity-chromatography using epitope-specific immunogen.
Concentration :	1 mg/ml
Storage_stability :	-20°C/1 year
Msds :	MSDS_Antibody.pdf



Other_name : FGF1; FGFA; Fibroblast growth factor 1; FGF-1; Acidic fibroblast growth factor; aFGF; Endothelial cell growth factor; ECGF; Heparin-binding growth factor 1; HBGF-1

Product Images



Immunohistochemical analysis of paraffin-embedded Human brain. Antibody was diluted at 1:100(4°,overnight). High-pressure and temperature Tris-EDTA,pH8.0 was used for antigen retrieval. Negative contrl (right) obtaned from antibody was pre-absorbed by immunogen peptide.