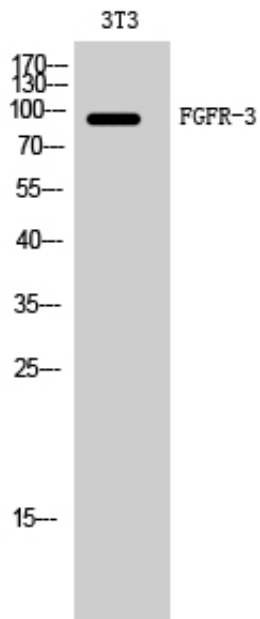


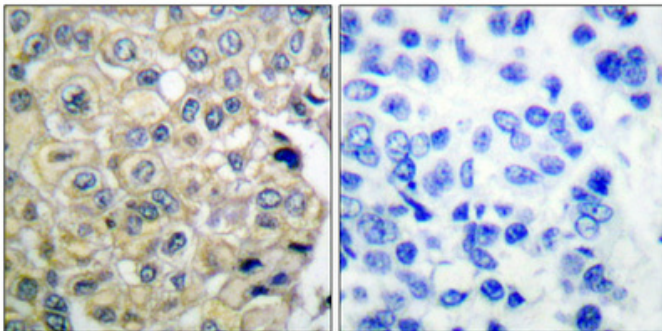
FGFR-3 Polyclonal Antibody

Catalog_no :	AT1701
Applications :	WB,IHC-p,ELISA
Reactivity :	Human,Mouse,Rat
Category :	抗原抗体
Size :	100µg/50µg/20µg
Gene_name :	FGFR3
Protein_name :	Fibroblast growth factor receptor 3
Humangene_id :	2261
Humanswissprot_no :	P22607
Mouseswissprot_no :	Q61851
Immunogen :	The antiserum was produced against synthesized peptide derived from human FGFR3. AA range:131-180
Specificity :	FGFR-3 Polyclonal Antibody detects endogenous levels of FGFR-3 protein.
Formulation :	Liquid in PBS containing 50% glycerol, 0.5% BSA and 0.02% sodium azide.
Source :	Rabbit
Dilution :	Western Blot: 1/500 - 1/2000. Immunohistochemistry: 1/100 - 1/300. ELISA: 1/10000. Not yet tested in other applications.
Purification :	The antibody was affinity-purified from rabbit antiserum by affinity-chromatography using epitope-specific immunogen.
Concentration :	1 mg/ml
Storage_stability :	-20°C/1 year
Msds :	MSDS_Antibody.pdf
Other_name :	FGFR3; JTK4; Fibroblast growth factor receptor 3; FGFR-3; CD antigen CD333
Molecular Weight :	95KD

Product Images



Western Blot analysis of 3T3 cells using FGFR-3 Polyclonal Antibody diluted at 1 : 500



Immunohistochemical analysis of paraffin-embedded Human breast cancer. Antibody was diluted at 1:100(4°, overnight). High-pressure and temperature Tris-EDTA, pH8.0 was used for antigen retrieval. Negative control (right) obtained from antibody was pre-absorbed by immunogen peptide.